

# Public Art Trail

This art trail compiled by Farnham Town Council in partnership with Farnham's Public Art Trust, will lead you on a voyage of discovery as art and craft features on public display create a sense of place and individuality.

Farnham is known as a town of arts and crafts, home to the University for the Creative Arts, the Farnham Maltings arts and community centre, the New Ashgate Gallery and the historic Farnham Pottery. It also has a wide range of public art and craft. Follow the art trail around Farnham and discover sculptures wood carvings, terracotta designs and ironwork.

Pick up a copy from a local information point or the Farnham Town Council offices.

Download your copy of the Farnham Public Art Trail [here](#).



1. Andernach mill stone copyright FTC



17. Sculpture park copyright FTC





19. Galleon, Castle Street copyright FTC



Victoria Gardens





---

## James Hockey & Foyer Galleries

The James Hockey and Foyer Galleries is a public exhibition space at the [University for the Creative Arts](#). The aim of the gallery is to present work of lasting educational importance which will invite participation and contribute to the public and professional debate.

Respect for the specialist appreciation of disciplines, media and techniques remains vital to the promotion of the arts at the Galleries.

## Opening Times

Monday to Friday 10am – 5pm

Saturday 10am – 4pm

Sunday – Closed

---

# University for the Creative Arts (UCA)

Creativity is the energy that drives everyone at the UCA Farnham to invent, explore and collaborate. UCA Farnham has over 2,000 students studying a wide range of creative arts subjects including fine art, architecture, photography, textiles, crafts, film, graphics, journalism, fashion and advertising. The Farnham campus offers a cutting-edge creative environment, packed with the latest equipment and resources. With a unique community of artists, designers, makers, writers and researchers.

The university has two different areas on Falkner Road open to the public: [The Craft Study Centre](#) and the [James Hockey and Foyer Galleries](#).

The sculpture park at the UCA Farnham has been developed in the grounds and green spaces surrounding the University since 1998. Open to the public, the sculpture park exhibits works by sculptors with a national reputation, graduates and students of the university. See the [sculpture park map](#).

---

## The Lightbox

Hosting a wide range of free exhibitions in three galleries which change regularly The Lightbox is also home to Woking's Story. The canal side café has a delicious range of lunches, cakes and snacks and the gift shop has a unique range of gifts that are perfect for presents.

### Opening times

Tuesday, Wednesday, Friday and Saturday 10.30am-5pm

Thursday 10.30am-8.30pm

Sundays 11am-5pm

Mondays and Bank holidays – Closed

---

## Watts Gallery – Artists' village

Discover stunning Victorian paintings and sculpture in the historic Watts Gallery before treating yourself to lunch or a cream tea in the Tea Shop. Enjoy a quiet moment and wander to the nearby Grade I-listed Watts Chapel, taking in the beautiful woodlands and grounds, or find out more about the lives of G F and Mary Watts at Watts Studios before taking a tour of the artists' home, Limnerslease. In the Pottery Building there is art for sale in the Watts Contemporary exhibition along with a wide selection of gifts, books and homewares in the shop.

### Opening times

Watts Gallery and Watts Studios

Open Tuesday to Sunday: 11am – 5pm

Closed Monday, with the exception of Bank Holidays

Watts Chapel

There is no admission charge for visiting Watts Chapel.

Monday to Friday: 9am – 5pm

Saturday to Sunday: 10am – 5pm

Visitors' Centre

Includes the Visitors' Centre, shop and Watts Contemporary Gallery

Open Monday to Sunday, including Bank Holidays: 10.30am – 5.15pm

Contact: 01483 813593

The Tea Shop

Open Monday to Sunday, including Bank Holidays: 10.30am – 5pm

Contact: 01483 813590

---

# The Sculpture Park

There is always something new to discover, with over 300 artists showcasing 600 sculptures, almost everything is for sale and as a result the exhibits are forever changing.

The park is sited within ten acres of stunning arboretum and wildlife inhabited water gardens. It has been developed over the years, with a series of landscaping projects and the introduction of thousands of new plants, bulbs and specimen trees.

The natural contours of the rolling Surrey Hills have provided the perfect haven for the display of sculpture, with over two miles of paths meandering through mixed heathland and woodland in a natural valley enhanced by three lakes fed by two natural springs.

## Opening times

Everyday 10am-5pm

---

# Farnham Town of Craft

## England's Craft Town

From the [University for the Creative Arts](#) to major museum, exhibition and specialist retail outlets and craft-related businesses, Farnham is home to both world renowned craft artists and to the next generation of emerging makers. Craft sits at the heart of Farnham's distinctiveness and this special feature was acknowledged in 2013 when Farnham was designated as England's Craft Town.

The roots of Farnham's engagement with craft can be dated back to the time when Farnham exported white clay to the Romans. In the 16th century, potteries in Farnham were major suppliers of pottery to London. But its real emergence as a town with a special leaning towards craft is in the Victorian era and the establishment and great success of [The Farnham Pottery](#), Wrecclesham, with its reputation for the distinctive style of work known as Greenware (so called because of the copper-green glaze).

The establishment of The Farnham School of Art in 1880 strongly promoted the education in craft subjects as part of its curriculum, and a powerful reputation was developed that has lasted throughout the 20th century and to the present day especially in courses in textiles and ceramics. Craft courses at both undergraduate and postgraduate levels are offered at the [University for the](#)

[Creative Arts at Farnham](#), the successor institution to the Art School. Craft courses in jewellery, metalwork, glass as well as in textiles and ceramics offer today's emerging craft makers unrivalled opportunities in some of the best equipped studios and workshops in any specialist university in the country.

The opportunity to exhibit, sell and present contemporary crafts in Farnham is a significant feature of the town's creative programme. The emergence of the [Farnham Maltings](#) as an arts centre in the 1970s has been of especial importance to the cultural life of Farnham, and the crafts have very strongly featured in its contemporary programme: right at the heart of its diverse cultural offer. There are year-round exhibitions featuring young as well as world class craft makers. There is a particular focus on the craft fair, with an unrivalled series of events featuring everything from textiles to sugarcraft, drawing international audiences to the town and having a powerful and positive effect on the creative economy. Craft studios are established in the [Farnham Maltings](#) to sustain the craft infrastructure.

Craft across the centuries can be seen and researched from Farnham Greenware in the town's museum through to the unrivalled collections of the [Crafts Study Centre](#). [The New Ashgate Gallery](#) offers a diverse range of craft work for sale and is especially focused on creating opportunities for emerging makers.

Craft is embedded into the fabric, the homes as well as the cultural life of Farnham.

## Steering Group

Farnham Craft Town celebrates the role of craft at the heart of the town and the following organisations sit on a steering group which aims to embed craft into the everyday life of the town by encouraging new audiences and visitors to Farnham; supporting a vibrant marketplace of craft-makers and promoting the role of craft in improving health and well-being:

[Crafts Study Centre](#)

[Farnham Maltings](#)

[Museum of Farnham](#)

[Farnham Pottery](#) includes [318 Ceramics](#) , [Farnham Sculptors](#) , [Pugmill Bakehouse](#) and [West Street Potters](#)

[Farnham Town Council](#)

[New Ashgate Gallery](#)

[Surrey Cultural Services](#) includes [Adult Learning](#) , [Library](#) , [Heritage](#) and [Arts](#)

[University for the Creative Arts](#)

[Waverley Borough Council](#)

## Other Craft organisations and venues in and around Farnham

### The Sculpture Park

Established in 2003, the [Sculpture Park](#) specialises in the sale of 20th century modern and contemporary sculpture in a superb natural setting. It aims to boost the careers of some of the world's most talented artists in an environment that is sculpted and adapted to suit.

### Watts Gallery and Watts Chapel

The [Watts Gallery](#) is dedicated to the work of the Victorian era painter and sculptor George Frederic Watts OM RA. With over 100 paintings and sculptures on

permanent display, visitors can experience the Watts' collection in the historic galleries with its original decorative schemes.

#### The Surrey Guild of Craftsmen

**Surrey Guild of Craftsmen** members are selected professional craftsmen and designer makers of contemporary and traditional applied arts. Their work is distinguished by fine craftsmanship and innovative design.

#### Farnham Art Society

Records of an 'Art Club' in Farnham survive from the 1860s. In 1948, James Hockey formed the **Farnham Art Society** and arranged meetings and demonstrations as well as the high quality annual exhibition showing work from the prestigious membership. Among its membership of highly gifted amateur and professional artists, many are also members of the Wapping Group, the Royal Institute of Painters in Watercolour, the Royal Institute of Oil Painters, the Society of Graphic Fine Art, the Society of Women Artists, the Pastel Society, the Society of Floral Painters, the Chartered Society of Designers and are Fellows of the Royal Society of Arts, keeping the standard of work exhibited at an annual exhibition to a high standard. A selection panel of professionals ensures the annual exhibition, held in the James Hockey & Foyer Galleries of the UCA, reflects the vitality and diverse ambitions of its membership. Around 4,000 visitors view the 400 paintings, ceramics and sculpture exhibited, giving them a great opportunity to access unique affordable art.

---

## Crafts Study Centre

The Craft Study Centre is a specialist university museum open free to the public. The centre's acclaimed collections include modern and contemporary calligraphy, ceramics, textiles, furniture and wood as well as makers' diaries, notes and photographs. Inspiring exhibitions and talks by leading artist-makers are held year round, alongside an annual academic symposium.

#### Opening hours

Tuesday-Friday 10am-5pm

Saturday 10am-4pm.

---

## New Ashgate Gallery

A well established and welcoming gallery full of high quality fine arts and craft to suit all your needs. With new exhibitions every six weeks use the **what's on** page to keep up to date with current exhibitions and events.



The New Ashgate Gallery also champions artists and affordable art and craft in Farnham, Surrey and beyond.

## Opening times

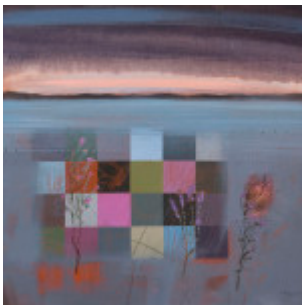
Tuesday to Saturday 10am-5pm



Charlotte Gerrard, Birds of a Feather. Copyright New Ashgate Gallery



Emily Gardiner by Libbi Pedder copyright New Ashgate Gallery



Fiona Millais, New day, three heathers copyright New Ashgate Gallery



Ingrid Saag, Tulip and anemome vases copyright New Ashgate Gallery



Bea Jareno



Tessa Pearson – Garden Dreams orange study copyright New Ashgate Gallery



Printmakers Council\_Glynis Porter 50 New Ashgate Gallery



hare\_s\_looking\_at\_you New Ashgate Gallery



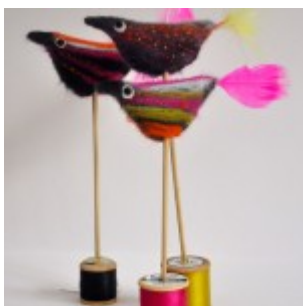
Aimee Bollu – Curious Boxes – Photographer Yasmin Ensor. New Ashgate



New Ashgate Gallery Gerry Baptist



New Ashgate Gallery Shakspeare Glass christmas



naomi beevers birds on spools copyright New Ashgate Gallery



rachel mulligan portrait image copyright New Ashgate Gallery



rachel mulligan glass image for workshop copyright New Ashgate Gallery



judith needham basket with wood handle copyright New Ashgate Gallery



Adam Green El corazon de las mesas, New Ashgate

---

## Farnham Pottery

Farnham Pottery provides community based arts, craft and education at the former industrial site.

Established in 1873 by local potter Absalom Harris, it operated for over 130 years and was run by five successive generations of the Harris family. Many well-known local potters learnt their craft at the Pottery.

The Farnham Pottery is home to three craft organisations:

### 318 Ceramics Adult Pottery Classes

A creative organisation, which provides education and support to all makers, from complete beginners through to professionals. Offering a programme of skills-based courses, workshops and master classes, all 318 Ceramics tutors are experts in their respective fields, and many have strong international reputations in both teaching and practice. There are four dedicated studios for makers and a growing programme of community engagement projects. 318 Ceramics Adult Pottery Classes offers open access studios and a hireable craft studio.

Email: [info@318ceramics.co.uk](mailto:info@318ceramics.co.uk)

Website: [www.318ceramics.co.uk](http://www.318ceramics.co.uk)

### West Street Potters

West Street Potters run day and evening classes for people of all abilities to experience ceramics through classes, workshops and community events.

Email: [weststreetpotters@btinternet.com](mailto:weststreetpotters@btinternet.com)

Website: [www.weststreetpotters.co.uk](http://www.weststreetpotters.co.uk)

## Farnham Sculpture

Farnham Sculpture is a group of wood and stone carvers, offering well equipped studio space and support for both experienced and novice carvers. Farnham Sculpture also offer workshops and courses throughout the year.

Website: [www.farnhamsculpture.co.uk](http://www.farnhamsculpture.co.uk)



Farnham Pottery workshop copyright Farnham Sculptures



Farnham Pottery kiln

---

## Farnham Maltings

Set in the heart of Farnham, Farnham Maltings is a creative organisation that works with artists and communities to encourage people to make, see and enjoy the best art possible. The Maltings offers a diverse programme of events and activities, including theatre, cinema, craft, music, comedy and workshops.

There are six resident theatre and dance companies who produce and tour work regionally, nationally and internationally. The Farnham Maltings also host a number of resident companies in the 16 studios, darkroom and pottery studio specialising in everything from art, textiles and jewellery to photography, hairdressing and golf landscaping.

The Farnham Maltings also host a [monthly market](#).

### Opening times:

Box Office

Monday – Wednesday 9am-5.20pm

Thursday-Friday 9am-7pm

Saturday 10am-2pm

Riverside Café Bar

Monday – Tuesday 9.30am–5pm food served 10am–2.30pm

Wednesday – Friday 9.30am–8pm food served 10am–7.30pm

Saturday 10am–4pm food served 10.30am–2.30pm



Farnham Maltings front



Thread festival, Farnham Maltings



Outside of the Farnham Maltings.