



**The Farnham Society  
presents**



# **Heritage Open Days**

**Friday 10<sup>th</sup> to Sunday 19<sup>th</sup> September 2021**



**Free Admission  
to all venues,  
tours and events**

[www.farnhamsociety.org.uk](http://www.farnhamsociety.org.uk)

Supported by



[www.farnham.gov.uk](http://www.farnham.gov.uk)

# HERITAGE OPEN DAYS IN FARNHAM 2021

## DISCOVER FARNHAM OUT OF DOORS!

### Welcome from the Farnham Society

Restrictions tend to drive creativity and this year's brochure for the Heritage Open Days festival is an excellent example of what can be achieved by coordinating many activities to provide a pleasant experience and yet still be within the current restrictions on freedom of movement.

Supported by many volunteers it has been the responsibility of the Heritage Open Days Committee of The Farnham Society, despite the many restrictions and uncertainties during the planning process, to coordinate and deliver the festival for 2021. We believe that objective has been achieved in providing an interesting and stimulating programme which will bring much enjoyment to those who join us in September.

More details are contained in this brochure and it is hoped that somewhere among all the varied topics of architecture, local history, public houses, buildings of interest, countryside walks and a visit to an arboretum, tractor rides, restored murals and many other organised activities, you will find something of interest.

We hope that you will seize these opportunities to join us and have an enjoyable time, entry to everything is free!

Alan Gavaghan  
Chairman, The Farnham Society



## Heritage Open Days 2021

The Farnham Society is proud to be able to say that in 2020 in spite of the Coronavirus restrictions the Heritage Open Days spirit was kept alive by the offer of a selection of self guided outdoor tours.

A unique survey of 38 publicly accessible green spaces large and small in and around the town was produced and published as two attractive leaflets, one listing spaces in the town centre and the other describing areas a little further afield. These independent tours were very well received and the leaflets are still available at the council offices in South Street or online at:

[farnhamsociety.org.uk/hods2020](http://farnhamsociety.org.uk/hods2020)

This year the situation regarding Covid restrictions is still uncertain and it has been decided not to open buildings as in the past, but to shine the spotlight on the town's heritage as seen from out of doors.

In the town centre visitors are invited to join tours led by experts which will explore little known parts of the town and explain the history and detail of the beautiful buildings which line the streets, while in the surrounding areas of the town there will be adventurous walks revealing the history and natural history which surround us.

Farnham with its fifteen centuries of history, its twelfth century castle and romantically ruined Cistercian abbey, the architectural splendour of its beautiful buildings, its modern World Craft Town status, and its glorious green surrounding area with hills, forest and heathland, is an exciting place waiting to be explored.

This programme offers a big menu with four open days and twenty-one outdoor tours, all waiting to welcome you to Heritage Open Days 2021.

Entrance to the four Special Open Days listed in the programme does not require pre-booking. All the guided tours must be booked in advance and will be limited to a maximum of 12 people per tour to ensure that social distancing can be maintained if required at the time. To book your place please visit the Farnham Society's website [farnhamsociety.org.uk/hods2021](http://farnhamsociety.org.uk/hods2021)

**BOOKING OPENS ON 30<sup>th</sup> AUGUST. PLEASE BOOK EARLY!**

## Covid 19 Restrictions

The information in this brochure was correct at the time of going to press in late July. All events will be subject to current Covid-19 restrictions which could be changed at any time before and during the HODs festival. Any late changes to our programme will be announced on the Farnham Society's website [farnhamsociety.org.uk/hods2021](http://farnhamsociety.org.uk/hods2021) and our Facebook page, "Farnham Heritage Open Days".

Please visit our website or follow us on Facebook to keep aware of any updates to our programme.

## Quick Guide

Please refer to listings for time and information

Key ● Main HODs event ○ Other HODs activities

| Page | Open Days                              | Fri 10 | Sat 11 | Sun 12 | Mon 13 | Tue 14 | Wed 15 | Thu 16 | Fri 17 | Sat 18 | Sun 19 |
|------|--|--------|--------|--------|--------|--------|--------|--------|--------|--------|--------|
| 5    | Farnham Castle                         |        |        |        |        |        |        |        |        |        | ●      |
| 8    | Museum of Farnham                      |        |        |        |        |        |        |        |        | ●      |        |
| 9    | Rural Life Living Museum               |        | ●      |        |        |        |        |        |        |        |        |
| 6    | Farnham Pottery                        | ○      | ○      |        |        | ○      | ○      | ○      | ○      | ●      |        |
| Page | Guided Tours                           | Fri 10 | Sat 11 | Sun 12 | Mon 13 | Tue 14 | Wed 15 | Thu 16 | Fri 17 | Sat 18 | Sun 19 |
| 20   | Alice Holt Forest Arboretum            |        |        |        |        |        |        | ●      |        |        |        |
| 10   | From Bat to Cow via Moths              | ●      |        |        |        |        |        |        |        |        |        |
| 21   | Architecture in The Borough & West St. |        |        |        |        |        |        |        | ●      |        |        |
| 10   | Farnham's Brewing Heritage             | ●      |        |        |        |        |        |        |        |        |        |
| 15   | The Architecture of Castle Street      |        |        | ●      |        |        |        |        |        |        |        |
| 20   | Courtyards & Passages of Farnham       |        |        |        |        |        |        | ●      |        |        |        |
| 18   | Coxbridge Farm                         |        |        |        |        |        | ●      | ●      |        |        |        |
| 16   | Dippenhall and Falkner country         |        |        |        |        | ●      |        |        |        |        |        |
| 17   | Eastern Alleyways                      |        |        |        |        | ●      |        |        |        |        |        |
| 16   | The Kitty Milroy Murals                |        |        |        |        | ●      |        |        |        |        |        |
| 12   | The History of Moor Park House         |        | ●      |        |        |        |        |        |        |        |        |
| 22   | A Visit to Pierrepont                  |        |        |        |        |        |        |        |        | ●      |        |
| 11   | Town Centre Plaques                    | ●      |        |        |        |        |        |        |        |        |        |
| 15   | Rowledge to Wrecclesham & back         |        |        |        | ●      |        |        |        |        |        |        |
| 11   | RSPB at Farnham Heath                  |        | ●      |        |        |        |        |        |        |        |        |
| 21   | space2grow                             |        |        |        |        |        |        |        | ●      |        |        |
| 13   | Tice's Meadow                          |        |        | ●      |        |        |        |        |        |        |        |
| 18   | Town Centre Parks and Gardens          |        |        |        |        |        | ●      |        |        |        |        |
| 13   | The Victoria Garden                    |        |        | ●      |        |        |        |        |        |        |        |
| 22   | Rise and Fall of Waverley Abbey        |        |        |        |        |        |        |        |        |        | ●      |
| 12   | An Architectural Look at West St.      |        | ●      |        |        |        |        |        |        |        |        |



View from "Dippenhall and Falkner Country Walk", see page 16



## OPEN DAYS

**FARNHAM CASTLE (grounds only), Castle Street GU9 0AG**

**Open Sunday 19 September 11am to 5pm**

**No advance booking required**

**Map A**



Disabled parking only at the Castle. Parking available in Farnham Park (entrance off Folly Hill), entering the castle grounds through the Postern Gate. No dogs except guide dogs.

The Keep will be open, climb the steep steps for an unrivalled view in all directions.

The grounds will be open on Sunday 19th September, when Venue Director Kathleen Edwards and her staff will welcome visitors to come and enjoy the beautiful setting of the castle. There will be re-enactments of Civil War battles, tours of the grounds and historic gardens plus at 2pm a tree tour by retired tree expert Peter Bridgeman.

Historic Farnham Castle dates from the 12th century and for 800 years was the home and power base of the Bishops of Winchester. It is now a venue for events, conferences and wedding receptions. The castle is the jewel in Farnham's crown, looking down upon the town of today from its elevated position on Castle Hill as it has done for almost 1000 years. The historic buildings are listed Grade I and Grade II. The castle was built as a Palace of the Bishops of Winchester and visited by royalty, but when the Diocese of Guildford was created in the 20th century it was no longer needed by the Church Commission, who proposed to 'ruinate' the buildings (take the roofs off) and leave it as a romantic ruin.

It was saved by the Farnham Society in the 1950s which was instrumental in arranging a full repairing lease to the Centre for International Briefing, offering courses for people about to take up jobs abroad. The dilapidated buildings were gradually restored and used by the Centre until 2012, when the Castle became what it is today, a successful Events, Conference and Wedding venue.

**FARNHAM POTTERY, Quennells Hill, Wrecclesham, GU10 4SL**  
**Open throughout HODs period, 9am - 4pm, apart from Sundays and Mondays**

**Saturday 18 September, Kiln Tours with Q and A session at 10am, 12 noon and 2pm. Advance booking essential for these tours.**

**Historic walking tour of the pottery - using your smartphone, you will explore the hidden secrets of the buildings with this, onsite, walking video tour, narrated by Philip Harris.**

**Café open with a special 'Local and Wild' menu.**



**Kiln Tours:** Pottery owner Guy Hains will lead kiln tours at 10am, 12 noon and 2pm on Saturday 18<sup>th</sup> for a maximum of 12 people on each tour, tours last about 30mins, advance booking essential at [thefarnhampottery.co.uk](http://thefarnhampottery.co.uk)

Guy will be accompanied by Philip Harris, past owner of the Pottery and a member of the fifth generation of the Harris family who founded and ran the Pottery from 1873 to 1998. They will show visitors the rare double updraught wood and coal fired kiln and explain the traditional methods of packing and firing.

**Self-guided video tour:** Come to the Farnham Pottery to unlock a series of short videos using your smartphone and QR codes. The self-guided tour will lead you around the historic pottery buildings as you follow the production process, finding hidden secrets and hearing the stories of the skilled makers that worked the site over 5 generations of the Harris family ownership.

Tours last approx 40mins, available 10<sup>th</sup>-18<sup>th</sup> Sept, 9am-4pm, apart from Sundays and Mondays. Just bring your smartphone.

Visit [thefarnhampottery.co.uk](http://thefarnhampottery.co.uk) to find out more.

**Café:** The café celebrates the Heritage Open Days period with a 'Local and Wild' menu paying homage to traditional seasonal recipes, 10<sup>th</sup>-18<sup>th</sup> Sept, 9am-4pm, closed on Sundays and Mondays. Normal café prices apply.

Established in 1873 by farmer potter Absalom Harris, the Farnham Pottery operated for over 130 years run by five successive generations of the Harris family. Many well-known local potters learnt their craft at the Pottery and today it is a carefully preserved example of a Victorian country pottery with a host of charming architectural features. The potters of the day delighted in demonstrating their skills in making ornate chimney pots, window frames and archways as well as garden pots by the thousand.

In the later years of the 20th century, in the face of growing competition from garden centres the Harris business began to fail. In 1998 the buildings had deteriorated and were in danger of imminent demolition and replacement with a housing estate but they were rescued by the Farnham Building Preservation Trust which bought the site and carried out a gradual programme of restoration. In 2012 the pottery was sold to the present owners who have undertaken careful internal upgrades.



**MUSEUM OF FARNHAM, 38 West Street, GU9 7DX**

**Open Saturday 18 September 10am to 4pm**

**No advance booking required**

**Map B**



Refreshments will be available from the recently refurbished summerhouse, offering cakes, coffee and other delights.

The Museum of Farnham opened its doors for the first time on 26th April 1961. Now in 2021, it is celebrating 60 years as an organisation and being part of the local community, having continued to preserve Farnham's heritage throughout the period by adding to the collections and engaging with people through exhibitions, education programmes and events.

On 18th September to mark the occasion the museum staff are welcoming visitors to an event that brings different parts of the collection to life but also focuses on the wonderful history of 38 West Street, the Grade 1 listed Georgian building the museum is privileged to call home.

It is an outstanding and little altered example of Georgian architecture built in 1718 for a wealthy hop merchant John Thorne whose initials JT and the date 1718 can be seen on the drainpipe heads to the side of the building and is one of Farnham's only two non-ecclesiastical Grade I Listed Buildings.

Keep an eye on the museum's website:

**[farnhammaltings.com/museum/whats-on](https://farnhammaltings.com/museum/whats-on)**

for more details of the event and what will take place on the day. There will be something for everyone!



**THE RURAL LIFE LIVING MUSEUM, Reeds Road, Tilford, GU10 2DL**  
**Open Saturday 11 September 10am – 5pm**  
**No advance booking required**



Visit the museum in its rural setting of ten acres in Surrey heathland, free of charge, for a day of activities suitable for the whole family.

The museum is situated on the outskirts of Tilford near Farnham and houses a collection of over 40,000 artefacts in 30 buildings. It is also home to an arboretum.

The Museum is an open air museum of country life run by the Old Kiln Museum Trust. It is based on the history of agriculture and rural life between 1750 and the 1960s, displaying objects associated with farming and goods used by local craftsmen. The museum is set in ten acres of field, woodland and barns, with picnic facilities and café (booking for the café recommended).

It was started in 1973 by local residents Madge and Henry Jackson. Henry had already spent a number of years building up a private collection of agricultural equipment.

He had also started planting trees, leading to the development of the arboretum which now exhibits over 100 species. In 1973 Madge and Henry opened their collection to the public as the 'Old Kiln Agricultural Museum'.

The collection continued to grow through purchase and donation of equipment, and In 1984, a charitable trust was set up and the name was changed to Rural Life Centre. It is now the Rural Life Living Museum.

## GUIDED TOURS

**Advance booking essential at [farnhamsociety.org.uk/hods2021](http://farnhamsociety.org.uk/hods2021)  
Booking opens 30 August.**

All tours must be booked in advance and will be limited to 12 people.

### From Bat to Cow via Moths

**Friday 10<sup>th</sup> at 10.30am**

**Booking Essential.**



Meet at the Bat and Ball pub, Bat and Ball Lane, Wrecclesham GU10 4SA

**Guide: David Dearsley of the Bourne Conservation Group**

Tour length: 3 hours

A short walk from the Bat and Ball pub to the Spotted Cow pub with a stop at Middle Bourne Lane Wildlife Garden to see a collection of moths caught the previous evening – and to release them. Various stops en route to review points of interest. A shuttle service will be provided to take car drivers back to the start.

**Walking conditions:** some modest hills along the Bourne Valley. Strong walking shoes recommended, suitable for children and dogs on leads but not for wheelchairs.

### Farnham's Brewing Heritage

**Friday 10<sup>th</sup> at 11am**

**Booking Essential.**



Start from the Museum of Farnham, 38 West Street, GU9 7DX

**Map 2**

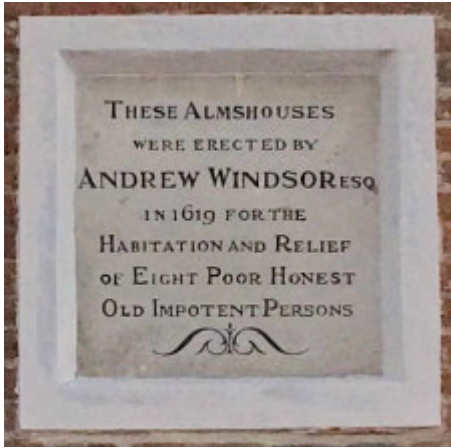
**Guide: Josh Godfrey**

Tour length 2 hours

During the course of this walk you will learn how the brewing industry has shaped and influenced the Farnham you see today. There will be a focus on two key elements, the wealth generated from hop growing and its consequent legacy, and Farnham's history as a brewer and seller of beer.

**Walking conditions:** This is an easy level walk, but includes some grassed areas so less suitable for pushchairs and wheelchairs.

**Town Centre Plaques  
commemorating People,  
Places and Events**  
**Friday 10<sup>th</sup> at 2pm**  
**Booking Essential.**



Start at Borelli Walk, off South Street, GU9 7RN

**Map 8**

**Guide: Peter Bridgeman**

Tour length approx. 2 hours

The tour will locate and discuss over 70 commemorative plaques featuring famous names, buildings and events over the past millennium. The 'names' include royalty, the clergy, artists, sports people, actors, musicians, politicians, architects and inventors. Farnham's history in microcosm.

**Walking conditions:** this is a level pavement walk around the town centre but crossing busy main roads. It is suitable for everyone including children, dogs on leads and wheelchairs.

**RSPB at Farnham Heath**  
**Saturday 11<sup>th</sup> at 9.45am for 10am  
start**  
**Booking Essential.**



RSPB, The Reeds Road, Farnham GU10 2DL

To park, drive into the Reeds Road entrance of the Rural Life Living Museum and then turn immediately left into the RSPB car park. Meet outside the little wooden RSPB office, 15 minutes before start time.

**Guide: Howard Inns**

Tour length 90 to 120 minutes

A walk around the beautiful heathland at the RSPB reserve. Howard is the resident reptile expert and hopes the walk will allow visitors to spot some reptiles and other wildlife local to the habitat.

**Walking conditions:** this is an easy walk mostly on paths, but off the paths the terrain is not suitable for pushchairs or wheelchairs. Walking boots or wellingtons recommended. Note: there is no visitor centre, bring your own refreshments.

## An Architectural Look at West Street

**Saturday 11<sup>th</sup> at 10am**  
**Booking Essential.**



Meet outside The Museum of Farnham, 38 West Street, GU9 7DX

**Map 2**

**Guide: Yolande Hesse**

Tour length: 1 hour

A close look at the architectural details, history and proportions of buildings in West Street with Yolande Hesse, retired partner of Back to Front Exterior Design.

**Walking conditions:** an easy walk on pavements, suitable for wheelchairs.



## The History of Moor Park House

**Saturday 11<sup>th</sup> at 11am and at 2pm**  
**Booking Essential.**



Start from Moor Park House, Moor Park Lane, GU10 1FE

Parking is available in the field opposite the main gates of the house, on the corner of Moor Park Way and Compton Way.

**Guide: Fred Wilkinson**

Tour length approx. 90 minutes.

Tours of the grounds, with information about the history of the property from the 11th century to the present day.

**Walking conditions:** this is an easy walk on tarmac or gravel and grassed areas. There are some steps and a rough cobbled yard. Not suitable for pushchairs or wheelchairs.



## Tice's Meadow: from farm to quarry to community nature reserve

**Sunday 12<sup>th</sup> at 10am**

**Booking Essential.**



Meet at the nature reserve's main entrance on Badshot Lea Road, GU9 9NB, opposite Farnham Van Sales in Badshot Lea. On street parking only.

**Guide: Mark Elsoffer**

Tour length approx. 2½ hours.

Volunteers from Tice's Meadow Bird Group will guide you on a 2.5 km walk around the reserve explaining the history of the site, from prehistoric farming, then quarrying and now the restoration of the site as an award-winning nature reserve. The walk will follow the Tice's Meadow Biodiversity Trail, taking in the waterside hide and the woodland feeding station. Binoculars and spotting scopes will be available but bring your own if you have them.

**Walking conditions:** The route is flat, along unsurfaced footpaths and can be muddy. Walking boots are recommended. If it is dry there is access for sturdy mobility scooters and some wheelchairs via a RADAR gate – please ring 07765 368977 beforehand.

## The Victoria Garden

**Sunday 12<sup>th</sup> at 10.30am**

**Booking Essential.**



Meet in The Victoria Garden, through the big brick archway in Brightwells Road off South Street, GU9 7RN

**Map 6**

**Guide: Alison Gordon**

Tour length 20 to 30 minutes

This is an award winning garden in the centre of Farnham, on the site of Farnham's first open air swimming bath which was built in 1897 to commemorate Queen Victoria's Diamond Jubilee.

The garden is a quiet small open space used by families and adults, with lots of seating, a children's maze, a hopscotch bed and a giant chessboard. Alison will explain the mix of planting which provides colour and interest throughout the year. The volunteer gardeners encourage wildlife and the garden is environmentally friendly.

**Walking conditions.** There is easy access to all parts of the garden with smooth paths. There are steps at the main entrance but there is a side entrance which is accessible for pushchairs and wheelchairs.

# what's on

# farnham **maltings**

something for everyone this Autumn!



Jenni Murray  
in Conversation  
Thu 09 Sep



sweater weather  
festival  
Fri 10 & Sat 11 Sep



Si Cranstoun: Twistin'  
the Night Away  
Fri 08 Oct



festival of crafts  
Sat 16 & Sun 17 Oct



Jon Courtenay  
Fri 22 Oct



Kiki Dee & Carmelo  
Luggeri  
Fri 05 Nov

box office 01252 745444 · [farnhammaltings.com](http://farnhammaltings.com)

## The Architecture of Castle Street

**Sunday 12th at 2pm**

**Booking Essential.**



Meet outside No.10 Castle Street, at the junction with Long Garden Walk, GU9 7JA

**Map 3**

**Guides: Michael and Robert Blower**

Tour length approx. 1½ hours

Castle Street was described by author and architect Alec Clifton-Taylor as “A street, indeed, which for sheer visual delight has few equals in all England”. Michael and Robert will lead a leisurely walk pointing out the architectural treasures of Farnham’s famous Georgian street with its many Listed Buildings, ranging from grand houses to tiny ancient cottages which would have been the homes of workmen employed by the Bishops at the castle. Many buildings are much older than their Georgian appearance would suggest, as fashionable Georgian frontages were added in the 18th century.

**Walking conditions:** easy walking on pavements, but including crossing busy Castle Street.

Suitable for wheelchairs.

## Rowledge to Wrecclesham and back

**Monday 13<sup>th</sup> at 10am**

**Booking Essential.**



Meet at St James’ Church, Church Lane, Rowledge, GU10 4EN

**Guide: Roy Waight**

Tour length: 2½ hours

The walk will explain that while Rowledge is not an old village, Wrecclesham is and Rowledge owes its origins to Wrecclesham.

The walk follows old footpaths from Rowledge to Wrecclesham passing Absalom Harris’s Victorian pottery, now a thriving pottery and arts centre. Crossing the A325 the route continues down to the River Wey and Willey Mill before returning to Rowledge via the old Holt Pound Oval Cricket Pitch, across the A325 and back following ancient footpaths and through Rowledge back to the church.

**Walking conditions:** there are stiles and steps, including one taxing climb up steps and the paths can be muddy. Walking boots recommended. Not suitable for pushchairs or wheelchairs. Anyone who completes the walk will be welcome at Roy’s house The Old Vicarage for a glass of wine and light nibbles.

## The Kitty Milroy murals, newly restored

**Tuesday 14<sup>th</sup> at 10am**  
**Booking Essential.**



Meet at St Marks Church, Upper Hale, GU9 OJG. There is a small car park.

**Guide: Nick Seversway**

Tour length: 45 minutes/1 hour

The church of St Mark's in Upper Hale hides an important and historic secret. About 100 years ago a local artist, Kitty Milroy, painted very beautiful murals of local people and local scenes in the church.

The artist was trained at The Slade between 1906-9 and subsequently enrolled three more times. The family moved to Hale from the Isle of Wight in 1902 on the death of her father the Rev A. Milroy and soon became part of village life. Find out more about the newly restored murals, their meaning and history, in the company of Nick Seversway who helped raise the funds needed for the restoration.

**Walking conditions:** there is wheelchair access into the building, though the floor inside is uneven in places. A hearing loop is available.

## Dippenhall and Falkner Country

**Tuesday 14<sup>th</sup> at 10am**  
**Booking Essential.**



Meet in Crondall Lane at the junction with Waynefleete Lane, GU9 7BH.

**Guide: Roy Waight**

Tour length: 3 hours

The walk starts among houses in Waynefleete Lane and Byworth Road on land which was once all hop fields. Where the houses peter out a footpath descends steeply to the Coxbridge Stream, and the walk then continues up and across a ridge with extensive views on either side, then down a steep footpath to cross Crondall Lane before going uphill again towards Burles Lodge and Burles House. This is Falkner country where the 20th century Farnham architect Harold Falkner built the nine Dippenhall Fantasy houses. The walk continues to Lower Old Park Farm and back via Dora's Green Lane to Dippenhall, then across the Coxbridge Farm land to the Alton Road and along West Street into Farnham.

**Walking conditions:** this is a very interesting but quite challenging three hour mainly off road walk up and down hill on rough surfaces. Walking boots are recommended and it is not suitable for pushchairs or wheelchairs.



## Eastern Alleyways

Tuesday 14<sup>th</sup> at 2pm

Booking Essential.



Meet at the Castle Street entrance to St George's Yard, next to Pizza Express, GU9 7LS

**Map 5**

**Guide: Chris Shephard**

Tour length: around 3 hours

A gentle stroll through some of the hidden alleyways and paths to the east of the town centre to reveal some little recorded aspects of the area's history, passing the site of an auction room cum post office, an early cinema, military establishments, churches, schools, police stations, warehouses, workshops, hospitals and people's houses. The walk will return via Farnham Park and the town's "Roman Quarter", following streams and the river that powered industry and got rid of the waste but also provided the first taste of swimming for generations of the town's youth. The walk will culminate in pleasure grounds that also were, in an earlier age, the settlement's rubbish dump.

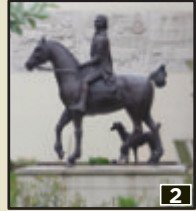
**Walking conditions:** the walk is all on made up footpaths or lanes. Strong footwear and waterproofs are recommended if it rains, there is little shelter and could be standing water. Some paths are narrow and may not accommodate wheelchairs.

## How well do you know the Farnham area?

A simple quiz, where is (or was) it?  
Answers on page 20



1



2



3



4



5



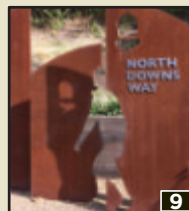
6



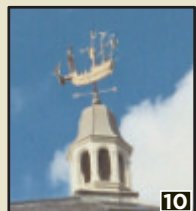
7



8



9



10

**Coxbridge Farm Trailer Ride**  
**Wednesday 15<sup>th</sup> at 9.30am**  
 (also on Thursday 16<sup>th</sup> at 9.30am)  
**Booking Essential.**



Meet at Coxbridge Farm, West Street, GU9 7AS. Parking available on site.

**Guide: Keith Kenward**

Tour length: 2 hours

A tractor-drawn trailer will take visitors across the farmyard and up on a leisurely tour through the peaceful fields of this 500-year-old farm, to the point where it meets Crondall Lane. The farm is privately owned by the Kenward family who have farmed here for over 50 years.

They are now setting up a rewilding project, planting new trees and managing the land to encourage wild flowers and wildlife.

**Conditions:** wear walking footwear. Not suitable for wheelchair users.



**Town Centre Parks and Gardens**  
**Wednesday 15<sup>th</sup> at 2pm**  
**Booking Essential.**



Meet at the Victoria Garden, Brightwells Road off South Street, GU9 7RN

**Map 6**

**Guide: Peter Bridgeman**

Tour length: approx. 2 hours

A town centre walk visiting some 12 open spaces large and small with information about each, highlighting the main attractions, history and planting, particularly trees. The sites include the Victoria Garden, Haren Garden, Borelli Walk, the North Downs Way, Gostrey Meadow, the Riverside garden at Farnham Maltings, St. Andrews Churchyard, the gardens at Willmer House (Museum of Farnham) and Vernon House (Farnham Library), College Gardens, the Crafts Study Centre, and the Evelyn Borelli Garden of Rest, all subject to being open on the day.

**Walking conditions:** the walk is mainly flat, mostly on pavements but with some grassed areas. Some busy main roads will be crossed but the walk is suitable for all ages and abilities including children, dogs on leads and wheelchairs. Dress according to the weather.



Private visit to studio  
of Sir Antony Gormley



Greensted Church, Essex



Emmetts Garden,  
Kent



The Chiding Stone,  
Chiddingstone, Kent



## THE FARNHAM SOCIETY

**Protecting our heritage, shaping our future**

The Farnham Society was founded in 1911 when its prime objectives were to preserve the architectural heritage of Farnham, to encourage integrity in the construction of new buildings, sympathetic to their surroundings, and to maintain the quality of life for future generations of its residents.

The Society continues to pursue those objectives, making every possible effort to preserve the quality of life in and around Farnham. To this end it promotes the highest standards of planning and architecture in the built environment. It supports preservation of the green environment. And it takes an active part in the fight for air quality and against traffic congestion.

We normally engage with our members through regular evening talks and daytime social gatherings. Under Covid-19 restrictions, we have instead presented a series of filmed discussions on matters of local interest. These are available on our website under the title 'In Conversation'.

Being a member of The Farnham Society enables you to have your say on the future of the town, and helps us to protect it. The more members we have, the louder our voice can be, and the better our chance of being heard on crucial issues.

You can join via our website [www.farnhamsociety.org.uk](http://www.farnhamsociety.org.uk)

**Coxbridge Farm Trailer Ride****Thursday 16<sup>th</sup> at 9.30am****Booking Essential.**

For details, see page 18.

**Courtyards and Passages of Farnham****Thursday 16<sup>th</sup> at 10am****Booking Essential.**

Meet outside Farnham Maltings, Bridge Square, GU9 7QR

**Map 4****Guide: Roger Jude**

Tour length: 1½ – 2 hours

This walk will take you round some of the lesser known areas of central Farnham, exploring the hidden courtyards and passageways which will provide an insight into Farnham's agricultural/industrial past in the 17th, 18th and 19th centuries. The tour will also point out some of Farnham's finest historic dwellings, built on the proceeds of the agricultural trade and later hop growing and brewing. Locations and buildings of historical interest will also be included in the tour.

**Walking conditions:** the walk will be at a gentle pace and is not lengthy but there will be traffic to contend with and various busy roads to cross. Comfortable footwear such as trainers is recommended. Not suitable for wheelchairs.

**Alice Holt Forest Arboretum****Thursday 16<sup>th</sup> at 2pm****Booking Essential.**

Meet at the Forestry England car park, Gravel Hill Road, Holt Pound GU10 4LQ (OS map SU 802433)

**Guide: Brian Greig**

Tour length: 1½ hours

The walk is around the Tree Trail in the Arboretum and highlights 30 of the most interesting trees. A brief history of Alice Holt Forest is included.

**Walking conditions:** easy walking on forest tracks, mainly level ground but with one decline and slight upward slope. Parts may be slippery if wet.

**Answers to the Quiz on page 17**

1. The Victoria Garden
2. William Cobbett Statue, Longbridge
3. Soapbox Derby, Castle Street
4. Woolmead, East Street  
( since demolished )
5. St. Andrews Church
6. West Street Cemetery  
( Mike Hawthorn's grave )
7. Borelli Yard
8. Wrecclesham Rec.  
( old pub sign of Billy Beldham )
9. Hickley's Corner
10. Top of Lion and Lamb Yard  
( The Mary Rose )



**space2grow****Friday 17<sup>th</sup> at 11am and at 2pm****Booking Essential.**

Meet just inside the entrance.

Park in the Waggon Yard car park GU9 7PS, walk along Lower Church Lane and up steps into the churchyard. Keeping the church on your right, take the path on the left which leads diagonally to the south-west corner of the churchyard. Go through the narrow opening and follow the path signposted The Bishops Meadow to a large wooden door. You have arrived!

**Map 7****Guide: Nicola Chinn**

Tour length: 15-30 minutes to be shown round, then time to sit and enjoy the garden.

space2grow is an acre of land where a community of local people have worked together to create a place offering activities aimed at improving everybody's mental health, young and old. In the Talking Shed a group of local mums run parenting courses, there is a weekly cooking club helping vulnerable adults to prepare healthy meals, gardening groups welcome isolated people to drop in, and there is a veg club.

A wildflower meadow and wildlife pond provide an outdoor teaching space for local schools and there are many other activities. The acre has won a number of awards.

**Walking conditions:** all flat with a gravel path at the entrance and then grass.

**Architecture in The Borough and West Street****Friday 17<sup>th</sup> at 11am****Booking Essential.**

Meet at the Town Hall arcade, corner of Castle Street and The Borough, GU9 7ND

**Map 1****Guide: Sam Osmond**

Tour length: 1½ hours

Farnham's West Street with its beautiful Georgian townhouses contains even more interesting buildings than Castle Street, including many by Harold Falkner.

The walk takes you to Willmer House, the home of the Museum of Farnham, one of Farnham's only two non-ecclesiastical Grade I Listed Buildings and arguably the finest building in the whole town. (The ground floor of the building is scaffolded awaiting repair work but the upper part of the frontage is visible.)

The tour will end with a visit to the Museum with a chance to see their collection of Falkner drawings.

**Walking conditions:** easy walking on level pavements but including busy road crossings. Suitable for wheelchairs.

**A Visit to Pierrepont****Saturday 18<sup>th</sup> at 10am****Booking Essential.**

Meet at Ellel Pierrepont, Frensham  
GU10 3DL, parking available

**Guide: Sam Osmond**

Tour length: 1½ hours

An external tour (main house only) of this extensive and important early Norman Shaw Old English style house built in 1876 for the brewer Richard Henry Combe of Watney, Combe and Reid. The tour will also look at what remains of the early garden design and garden buildings. Norman Shaw was one of the most significant and influential architects of the second part of the 19th century.

Hosted by Caitlin Hicks of Ellel Ministries who currently own the house. Tea and biscuits will be offered.

**Walking conditions:** easy walking, partly on grass. Disabled access to most areas. If heavy rain is forecast the tour will have to be cancelled.

The details in this brochure were correct at the time of going to press. For any last minute changes to the programme, please check the Farnham Society website at [farnhamsociety.org.uk/hods2021](http://farnhamsociety.org.uk/hods2021) or our Facebook page **"Farnham Heritage Open Days"**.

**The Rise and Fall of Waverley Abbey****Sunday 19<sup>th</sup> at 10am and at 11.30am****Booking Essential.**

Meet at the Waverley Abbey car park  
off Waverley Lane, GU9 8EP

**Guides: Roger Jude and Roy Waight**

Tour length: approx. 1½ hours

The walk from the car park passes in front of Waverley Abbey House and continues to the ruins of the 13th century Abbey Church, which is actually the second church to be built on the site. Waverley Abbey was the first Cistercian monastery to be founded in the UK, in 1128 by 13 monks from the Abbey of Aumone in France but these buildings have disappeared. The tour will show the remains of the 13th century Church, the Chapter House, the monks' Dormitory and the undercroft of the lay brothers' Refectory. The Abbey was dissolved by Henry VIII in 1535. Much of the stonework was sold and used in local grand houses such as Loseley House.

**Walking conditions:** the tour will be undertaken at an easy pace but some of the ground is rough pasture. Good footwear, e.g. trainers, is required and the total distance walked is 1 km.

# Farnham Town Council

## At the heart of the local community



Award-winning Farnham Town Council provides many essential services for residents including managing allotments and cemeteries, enhancing the area with community initiatives such as Farnham in Bloom, funding CCTV and running a year-long programme of events for all.

It also works in partnership with other councils and public services and the town's excellent voluntary groups and active business community.

As well as delivering a range of day-to-day services, with help from some wonderful volunteers, Farnham Town Council organises, runs and supports many additional activities and projects. Thank you to everybody who volunteers to help make Farnham a great place to live, work and do business all year round.

### Farnham Town Council's services include:

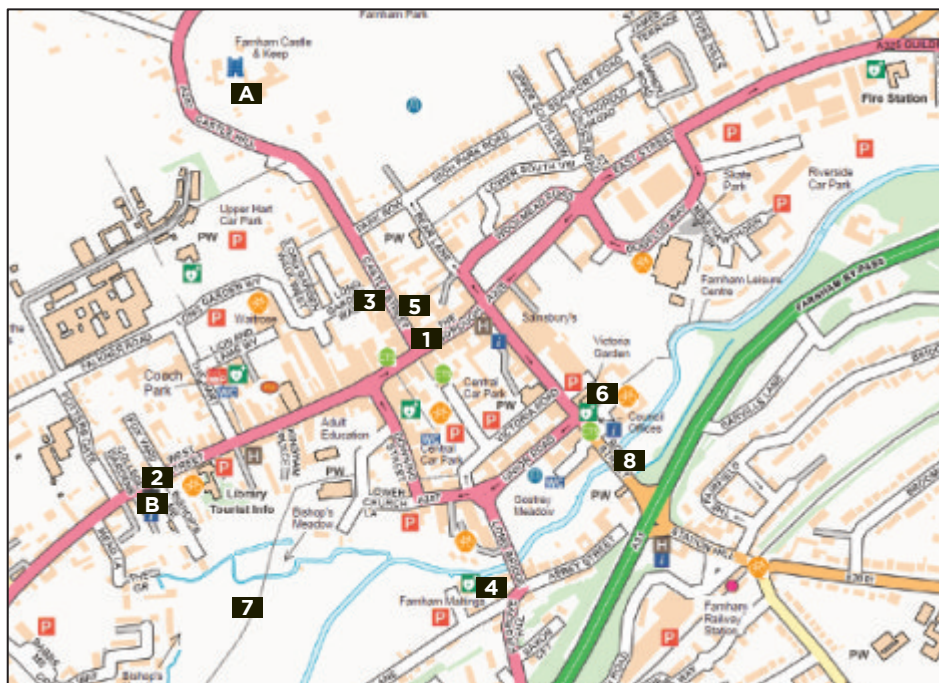
- Allotments
- Annual Town Meeting of electors
- CCTV and community safety
- Christmas lights
- Civic events
- Cemeteries
- Community enhancement including
  - Farnham in Bloom
  - Noticeboards
  - Street furniture
- Farmers' Markets
- Graffiti removal
- Grants for community organisations
- Planning – statutory consultee
- Managing the South Street Trust
- Managing bookings for street banners above the highway
- Toilets
- Tourism and events
- Town twinning with Andernach in Germany and other friendships
- War memorials



Farnham people are represented by 18 town councillors. They meet for full council meetings around nine times a year. Meetings are generally open to the public. Meeting dates and agendas can be found online at [www.farnham.gov.uk](http://www.farnham.gov.uk)

To find out more about Farnham Town Council and keep up to speed with what is happening throughout the year, sign up to receive the Council's enewsletter at [www.farnham.gov.uk](http://www.farnham.gov.uk)

# Map of Farnham Town Centre



## Key to map

### Events

- A Farnham Castle, Keep & Deer Park
- B Museum of Farnham

### Starting Points for Guided Tours

- 1 Architecture in The Borough and West Street
- 2 Farnham's Brewing Heritage
- 2 An Architectural Look at West St.

- 3 The Architecture of Castle Street
- 4 Courtyards & Passages of Farnham
- 5 Eastern Alleyways
- 6 Town Centre Parks and Gardens
- 6 The Victoria Garden
- 7 space2grow
- 8 Town Centre Plaques

The annual Heritage Open Days events in Farnham presented by The Farnham Society, supported by Farnham Town Council. Programme organisers Simon Bradbury, Peter Bridgeman, Cathy Cook, Gez Evans, Sue Farrow, David Lang, Gillian Ward and Erica Wilkinson.

The Farnham Society would like to thank all the walk guides who have made the 2021 events possible by generously giving their time and expertise free of charge.

Brochure text by Sue Farrow. Photos © Peter Bridgeman, Michael Clements, Farnham Pottery, David Fisher (AFFCC.uk), Anthony George, David Lang, Michelle Quinlan, Nick Seversway, Chris Shephard, Stedman Blower Architects and Erica Wilkinson.