

Local Liaison Forum 12 – Farnham Optimised Infrastructure Plan (OIP) Consultation

Farnham Infrastructure Programme

10 March 2021

Local Liaison Forum – Farnham OIP consultation (10 March 2021 – Facebook Live)

Introductions

Chair

Simon Duke – Programme Director, Surrey Country Council

Panel

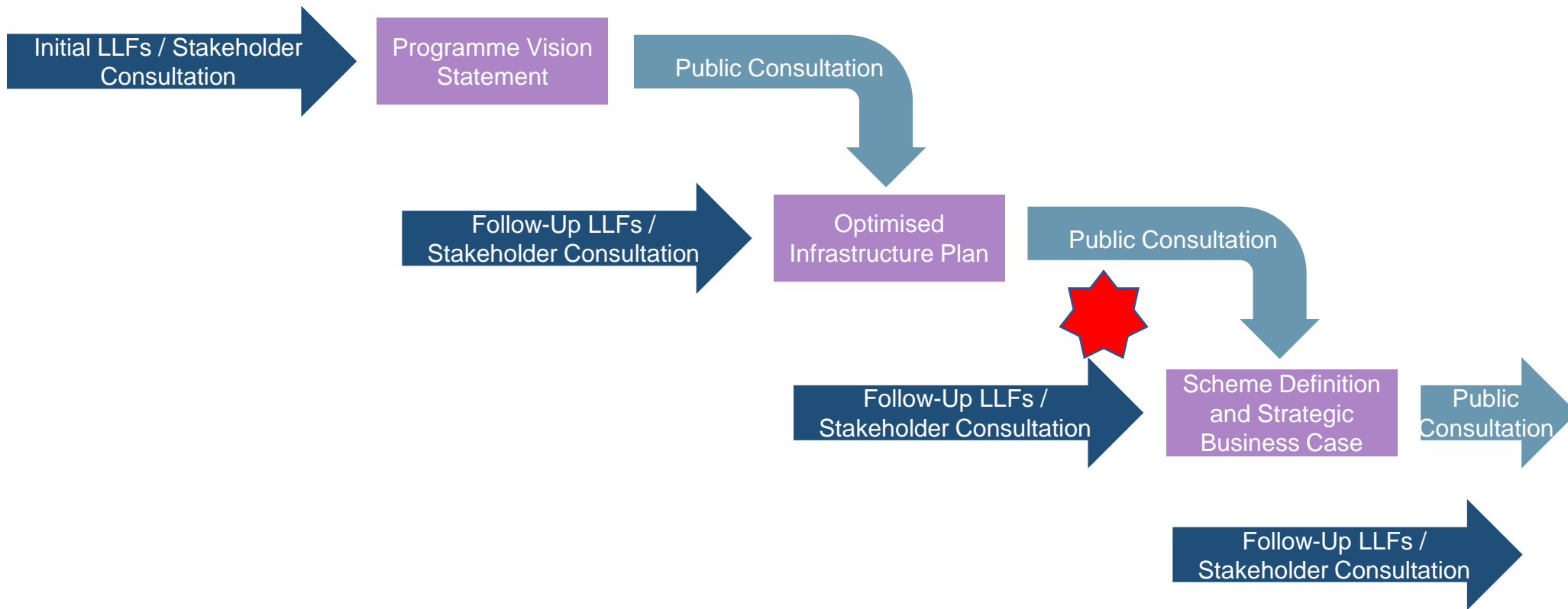
Paula Gough – Programme Manager, Arcadis Consulting (UK)

Jonathan Foster Clark – Design Lead, Atkins

Alex Pye – Assistant Design Lead, Atkins

Rachael Fisher, Quick Wins Design Lead, Atkins

Consultation in the programme development process



Farnham OIP consultation – welcome

Welcome

Welcome to the consultation on the draft Optimised Infrastructure Plan (OIP) for Farnham

Farnham is a beautiful town, from its position in the Surrey countryside to its historic centre and the strong sense of community from its people. There is much to celebrate and enjoy in the town.

Farnham is a great place to live but has major problems with traffic across the whole town. A town centre suffering from congestion and associated pollution, a congested dual carriageway which splits the community in two, narrow roads and pavements in many areas in the town which aren't fit for modern use, this list goes on.

We're pleased to have come together to develop the Farnham Infrastructure Programme to take a town-wide view on all the transport issues and work with people in the town to transform it for future generations.

These are our thoughts, assessments and suggested solutions to make a transformational change to the town. Some of what it contains is challenging. To tackle the causes of climate change means we all have to do things differently. Getting cars off the road is a simple yet very effective way to cut congestion and air pollution.



John Ward
Chair of Waverley
Borough Council



Rt Hon Jeremy Hunt
MP for South West
Surrey



We need your views

But we're not the real experts on Farnham, that's you. We need to know Farnham with you. Working together we will deliver the solutions you need. So, before we start any detailed planning work, we need your views on: We urge you to have your say in our early consultation, and we promise to keep asking you for your views as plans progress.

The consultation

This consultation, launched on 18th February 2020, is online to minimise the risk of transmission during Covid-19 restrictions. Online question and answer sessions will enable you to speak directly with members of the OIP team.

In parallel with the consultation we will be running Local Liaison Forums (LLFs) which will provide opportunities for people in Farnham to ask questions and give feedback. Meetings are online where social distancing restrictions are in place due to the coronavirus pandemic.

Find out more about the forums
www.farnham.gov.uk/LLF

Only by working together can we transform travel around Farnham, while simultaneously tackling the causes of climate change, and improving our health and wellbeing.

Introduction:

Farnham is a great place to live but has:

- A town centre suffering from congestion and associated pollution
- A congested dual carriageway splitting the community in two
- Narrow roads and pavements in many areas, unfit for modern use

All the Councils have come together to develop the infrastructure programme

The OIP presents our thoughts on how to make a transformational change

Farnham OIP consultation – wider context

Wider context

Any proposed changes need to comply with a number of policies to ensure they receive approval or are eligible for government funding, which may be crucial for a scheme to be taken forward.

Many policies will have changed since previous studies were undertaken for the town, which means that previous options may no longer be appropriate.

Key documents that inform our proposals include:

International

- The 2015 Paris Agreement - designed to limit global warming to well below 2 degrees Celsius, preferably 1.5, compared to pre-industrial levels.

National

- The Climate Change Act 2009 sets out emission targets for the UK, and was amended in 2019 to include a commitment to net zero carbon by 2050.
- The 2007 UK Industrial Strategy is a long-term plan to deliver jobs, economic growth and prosperity, and boost productivity by leading investments in skills and infrastructure.

Regional

- Transport for the South East's strategy looks at the impacts of how we travel on the economy and highlights the importance of net zero carbon and sustainable growth.
- The Enterprise M3 Local Enterprise Partnership's inclusive strategy notes that infrastructure has not kept pace with growth, congestion is an issue and rail links need improvement.

Local

- There are three strategic priorities in Surrey's 2050 Place Vision: at improving links within Surrey and between vital hubs, to enhancing towns, including reducing car travel and maximising built and natural environments; and to maximising Surrey's economic assets.
- Surrey's Climate Change Strategy focuses on leading climate change across every aspect of county services together with action by residents, businesses and partners. Surrey's 11 district and borough councils, and Farnham Town Council have also recognised the imminent threat and set their own emissions reduction targets.
- There are four priorities in the Surrey 2050 Economic Strategy: supporting the innovation economy; growing and sustaining quality places; maximising opportunities and capturing the potential of a 'greener' economy.
- Surrey County Council is currently producing a new Local Transport Plan. It is focused on reducing carbon emissions, ensuring communities are connected by encourage social mobility, supporting growth and helping communities thrive with clean air, excellent health, wellbeing and quality of life.
- Waverley's adopted Local Plan Part 1 sets out strategic policies across transport, housing, employment and infrastructure.
- The vision in the Farnham Neighbourhood Plan is 'for Farnham to continue to thrive, meeting the changing needs of the local community by ensuring new development... fits well with, and does not erode, the character... of the town and is supported by improved infrastructure.'

Plan objectives

Having considered the situation in the town, previous studies and relevant policies, the objectives of the plan are:

-  **Rapidly reduce carbon emissions, ensuring that Farnham and Waverley are on track for net zero by 2050**
-  **Well-connected communities across Farnham and the surrounding area**
-  **Support Farnham's economy and enable growth across the surrounding area**
-  **Improve the quality of place in Farnham, with clean air, healthy lifestyles and less dominance of traffic on communities**

6 What do you think about the issues in Farnham?
These questions are not for the public to answer. Responses will be shared with the council.



OIP objectives areas:

- Rapidly reduce carbon emissions
- Create well-connected communities
- Support Farnham's economy
- Improve quality of place

Farnham OIP consultation – town centre

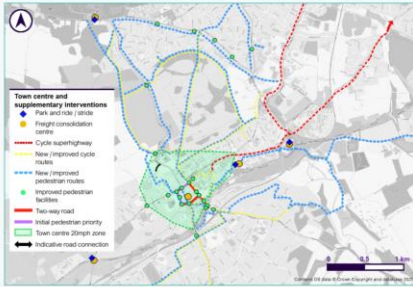
Possible town centre interventions

This is the historic heart of Farnham, an important destination between Guildford and Winchester that serves western Surrey and eastern Hampshire. It benefits from a dynamic economy, with high-quality shops, food and drink destinations, unique heritage and status as a World Craft Town. However, traffic dominates the town centre.

Work has already begun on new restrictions to HGVs travelling through the town, and consideration of lowering speed limits to 20mph and reclassifying roads is already underway. At its cabinet meeting in January 2021, Surrey County Council agreed £2.5 million in funding to deliver these 'quick wins' and for further feasibility studies.

Potential options could include:

- An integrated town centre strategy, ensuring high-quality public spaces
- Improvements to integrate walking routes from new development areas to the east, including Brightwells, into the rest of the town centre
- Major improvements to walking and cycling
- New public transport hubs
- A fundamental review of bus services to transform accessibility to the town centre using public transport
- Major changes to the town centre road layout, with major improvements to the pedestrian experience
- Better management of town centre car parking, including a review of existing car parks alongside new park-and-ride, cycle-dock, and electric signs to show where spaces are available
- Off-street locations for deliveries by goods vehicles
- New freight consolidation centres to reduce the number of goods vehicles entering the town centre, and medium term in the town centre, long-term delivery on the outskirts



6 What do you think about the towns in Farnham?

Potential options could include:

- Integrated town centre strategy
- Integrate walking routes from new development areas
- Major improvements to walking and cycling
- New public transport hubs
- Fundamental review of bus services
- Major changes to town centre road layout
- Better management of car parking
- Off-street locations for deliveries
- New freight consolidation centres

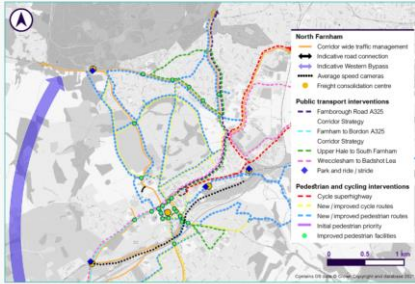
Farnham OIP consultation – North Farnham

Possible North Farnham interventions

This urban area has strong links with adjacent parts of Hampshire. There are traffic demands from both cars and goods vehicles. There are significant challenges caused by heavy traffic on roads including the A3016 through Upper Hale and A325 through Heath End.

Potential options could include:

- A programme of traffic management measures, which will be the subject of further study
- Improved walking and cycling, including high quality segregated routes through Babbled Lea and Westbourne, and new improved routes through Farnham Park
- Measures to create wider pavements and enhanced bus infrastructure on the A325 Farnham to Aldershot corridor
- Working closely with Hampshire County Council to ensure seamless new walking and cycling routes, bus routes and traffic management
- An initial assessment on the potential benefits of a Western Bypass, focusing on the ability to reduce through traffic
- Quick wins will also be progressed to tackle the impacts of heavy and speeding traffic through the area, including reduced speed limits (eg 20mph)



RIA Atkins Arcadis Waverley Surrey Farnham

6 What do you think about the issues in Farnham?

Potential options could include:

- Traffic management measures
- Improved walking and cycling routes
- Wider pavements and narrower roads
- Investigating / enhancing bus services and infrastructure
- Work with Hampshire County Council to ensure seamless travel
- Initial assessment on the potential benefits of a Western Bypass

Quick wins to tackle the impacts of HGVs and speeding traffic are being progressed

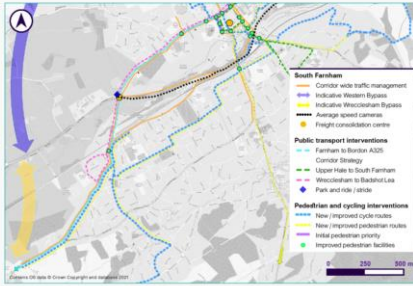
Farnham OIP consultation – South Farnham

Possible South Farnham interventions

This area faces significant challenges caused by local traffic and longer journeys from south west Surrey and eastern Hampshire. There are problems caused by the level crossing near the station, with long tailbacks. There are also problems caused by traffic passing through Wrecclesham, which experiences problems caused by a low rail bridge.

Potential options could include:

- Further studies for Wrecclesham, including investigation of the benefits of a bypass
- Schemes will be progressed for improved walking and cycling, including in Wrecclesham
- Further studies of the station area and ways to tackle severance between South Farnham and the town centre caused by the railway, A31 and River Wey
- Potential options to reduce the amount of traffic using the level crossing by the station
- New bus routes and better bus infrastructure through Wrecclesham
- Quick wins will also be progressed to tackle the impacts of speeding traffic in the area.



PIA Atkins Arcadis Waverley Surrey Farnham

6 What do you think about the issues in Farnham?

Potential options could include:

- Further studies for Wrecclesham, including investigation of a bypass
- Improved walking and cycling
- Further studies of the station area / ways to tackle severance from the town centre
- Options to reduce traffic using the level crossing
- New bus routes / better infrastructure

Quick wins will also be progressed to tackle the impacts of speeding traffic

Farnham OIP consultation – A31 corridor

Possible A31 corridor interventions

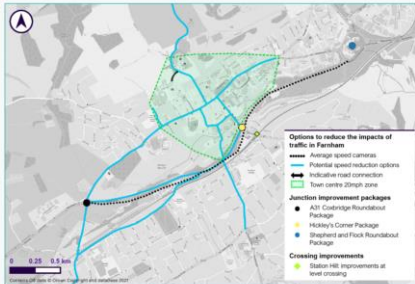
The A31 is the main east-west route through western Surrey and eastern Hampshire and plays a vital role in the regional economy. The main bottleneck on the route is the Hickley's Corner junction, with long queues on the approaches. The area is forecast to experience rapid growth in population, which will exacerbate delays at the junction.

Potential options could include:

We need to do more detailed study work to assess the A31 corridor and develop a programme of improvements between the Cobridge and Shephard and Flock roundabouts. This will include addressing the challenges at Hickley's Corner and fully integrating with the proposals for the town centre and South Farnham.

We have reviewed the options that were previously developed for an underpass at Hickley's Corner in the 1970s and 2000s. A new underpass solution may be desirable to build and could create serious disruption in the town if it is required during construction. It is also unlikely to be consistent with our objectives to rapidly reduce carbon emissions. We will therefore investigate a wide range of options that could solve the problems facing this area of the town.

Other key measures to improve road safety and smooth traffic flows by using average speed cameras, and reducing the speed limit on the A31, will also be considered.



6 What do you think about the issues in Farnham?
Please feedback at: <https://www.surrey.gov.uk/transport/consultations/a31-corridor-improvements>

A31 corridor options:

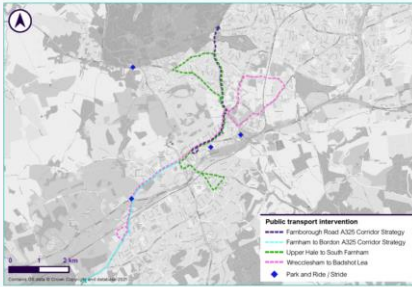
More study work to assess / develop a range of improvements options:

- Address Hickley's Corner
- Full integration with other proposals
- Junction improvement packages for:
 - Coxbridge Roundabout
 - Hickley's Corner
 - Shephard and Flock Roundabout
- Improvements at the level crossing

Farnham OIP consultation – Farnham-wide

Farnham-wide improvements

Providing environmental improvements across Farnham to help people travel and tackle the causes of climate change will be vital to the success of the programme, and to bring the change people in the town want to see.



Helping people leave the car at home

- Creation of a travel app, which brings public transport, walking and cycling options together in one place
- Introducing car clubs to the town, for people who don't need regular use of a car
- More work with schools to encourage more walking and cycling
- More emphasis on supporting pedestrians including improved footpaths, priority streets and new crossing points
- Increased cycle parking in the town centre and other key locations
- Dedicated cycle paths
- Hire or subsidised purchase of e-bikes and e-scooters

Reclaiming roads from cars

- Narrow and narrowing bus and traffic neighbourhoods – where it's harder for drivers to 'take over' through residential areas.

Using buses

- Improved on-board and bus stops
- Using electric and ultra low emission buses
- Review fares – including free passes and hopper tickets
- Review bus routes

What happens next?

Please provide your views on our plans for Farnham via the questionnaire on the website: www.surrey.gov.uk/farnhamprogramme

The views of people in Farnham are essential before we start detailed work on the proposals. Please share your views by Sunday 14 March 2023 by visiting www.surrey.gov.uk/farnhamprogramme

We will also have an online Q&A session if you would like more information: see the website for more details. You can also get involved through the Local Council Forum – find out more at: www.farnham.gov.uk/LF

We will take account of the feedback that you provide as we develop the next version of the Plan. We will also be carrying out further technical studies over the next six months to develop the proposals. We will then present a more detailed version of the Plan later in 2023, including a specific action plan for the key components.

What do you think about the issues in Farnham?

www.surrey.gov.uk/farnhamprogramme

Helping people leave the car at home:

- Creation of a travel app / introducing car clubs
- Work with schools to increase walking and cycling
- Improved footpaths, priority streets, new crossing points
- Improved paths and cycle parking
- Hire or subsidised purchase of e-bikes and e-scooters
- Piloting / rolling out low traffic neighbourhoods
- Improved bus stops and services – using electric and ultra-low emission buses
- Review fares and routes

Farnham Optimised Infrastructure Plan (OIP) Consultation

www.bit.ly/farnhaminfrastructure

