

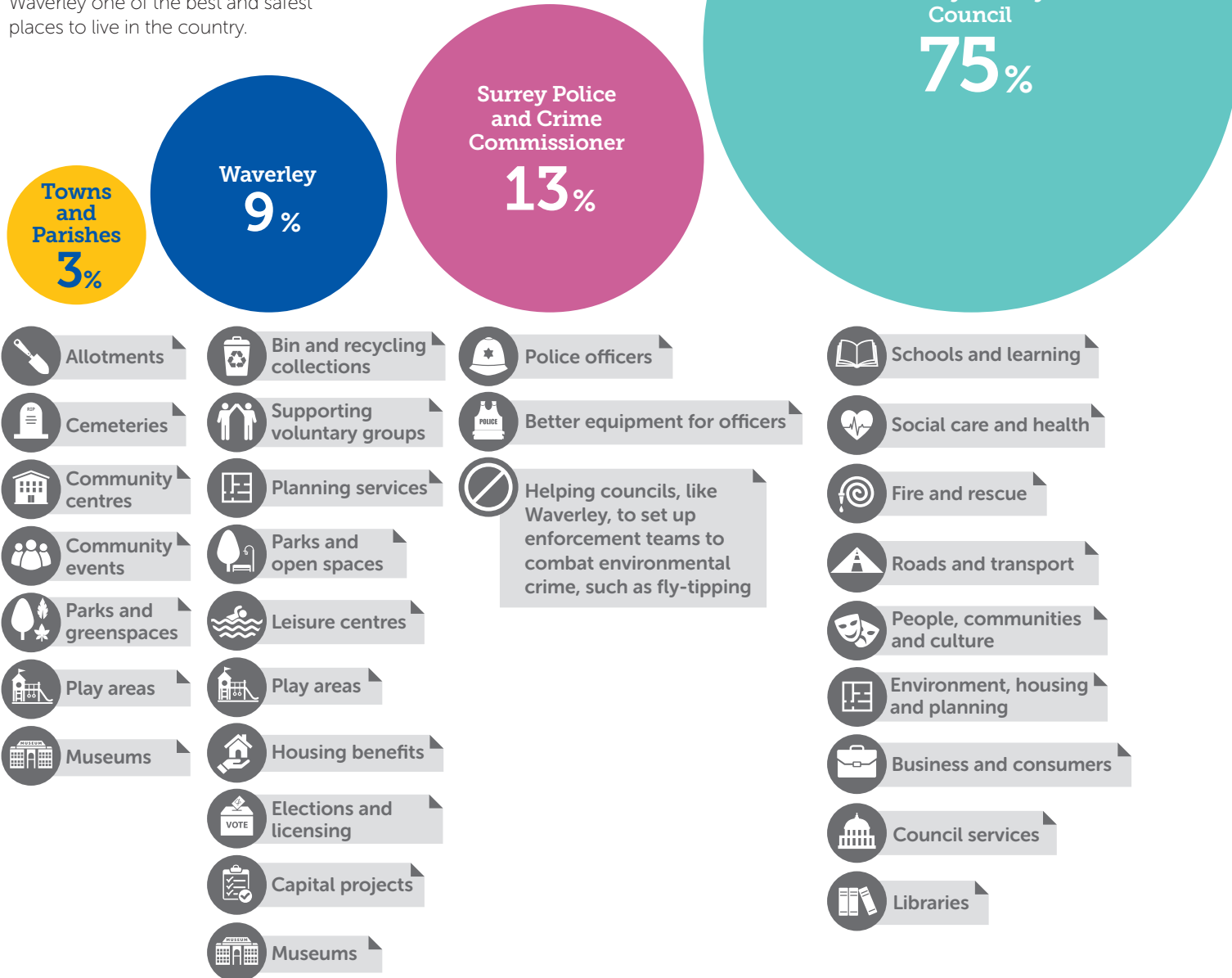
Council Tax 2018/19



What does your Council Tax pay for?

Waverley works together with Surrey County Council and the Police and Crime Commissioner to provide top class services and amenities to residents. Together we strive to make Waverley one of the best and safest places to live in the country.

Although Waverley collects all your Council Tax, it only keeps 9%, with the rest being split to cover the vast array of services delivered by each authority.



Waverley Borough Council will generate £9.6 million from its portion of Council Tax in 2018/19

We do not just rely on Council Tax to fund the services we provide. To help balance the books we have:

- procured four offices for local businesses that will provide an ongoing income stream through rent, that will be used to pay for services
- started work on the regeneration of Brightwells in Farnham, which has generated a significant upfront payment and will also provide future annual income for the council once the scheme has been built
- successfully bid to be a part of a Surrey-wide business rates pilot, with the opportunity to retain more income.

Waverley's overall budget for 2018/19 is £12.9 million; £9.6 million is generated from the council's portion of Council Tax.

We use your Council Tax to provide more than 110 services and strive to maintain high quality amenities that meet the needs of our residents. This year, as part of our spending plans, we will:

- **Support the fantastic work provided by the voluntary sector** with funding worth more than £685,000. Waverley provides financial support to a wide range of organisations including the Citizens Advice Bureau, Age UK, the Hoppa service, and day centres and arts organisations.
- **Maintain and improve our infrastructure** in the borough by investing in our parks and open spaces, playgrounds, car parks and leisure facilities.
- **Advance our IT capabilities to improve the customer experience** and encourage self-service so that our services can be accessed more conveniently for people who are on the go..
- **Focus on health and wellbeing**, ensuring the services we provide offer opportunities for residents to improve their standard and quality of living.

Council Tax bands

For every pound you pay in Council Tax:

- 75p** goes to Surrey County Council
- 13p** goes to the Police and Crime Commissioner for Surrey
- 9p** goes to Waverley Borough Council
- 3p** goes to Town and Parish Councils

Council Tax at Band D 2018/19																
Part of the Council's Area	2018/19 *Precept	Parish/ Town Council	Surrey County Council Basic	Surrey County Council (Adult social care)	Police and Crime Commissioner for Surrey	Waverley Borough Council	TOTAL	Band A	Band B	Band C	Band D	Band E	Band F	Band G	Band H	
	£	£	£	£	£	£	£	£	£	£	£	£	£	£	£	
Alfold	24,777	52.61	1,308.90	102.39	236.57	177.04	1,877.51	1,251.66	1,460.28	1,668.88	1,877.51	2,294.73	2,711.95	3,129.17	3,755.02	
Bramley	40,861	24.60	1,308.90	102.39	236.57	177.04	1,849.50	1,232.99	1,438.49	1,643.99	1,849.50	2,260.50	2,671.49	3,082.49	3,699.00	
Busbridge	14,250	27.23	1,308.90	102.39	236.57	177.04	1,852.13	1,234.74	1,440.54	1,646.32	1,852.13	2,263.71	2,675.29	3,086.87	3,704.26	
Chiddingfold	130,500	94.37	1,308.90	102.39	236.57	177.04	1,919.27	1,279.50	1,492.76	1,706.00	1,919.27	2,345.77	2,772.27	3,198.77	3,838.54	
Churt	34,481	53.69	1,308.90	102.39	236.57	177.04	1,878.59	1,252.38	1,461.12	1,669.84	1,878.59	2,296.05	2,713.51	3,130.97	3,757.18	
Cranleigh	344,989	66.68	1,308.90	102.39	236.57	177.04	1,891.58	1,261.04	1,471.22	1,681.39	1,891.58	2,311.93	2,732.28	3,152.62	3,783.16	
Dockenfield	6,000	25.43	1,308.90	102.39	236.57	177.04	1,850.33	1,233.54	1,439.14	1,644.72	1,850.33	2,261.51	2,672.69	3,083.87	3,700.66	
Dunsfold	40,700	75.96	1,308.90	102.39	236.57	177.04	1,900.86	1,267.23	1,478.44	1,689.64	1,900.86	2,323.27	2,745.68	3,168.09	3,801.72	
Elstead	40,000	34.04	1,308.90	102.39	236.57	177.04	1,858.94	1,239.28	1,445.84	1,652.38	1,858.94	2,272.03	2,685.13	3,098.22	3,717.88	
Ewhurst	83,836	69.00	1,308.90	102.39	236.57	177.04	1,893.90	1,262.59	1,473.03	1,683.45	1,893.90	2,314.76	2,735.63	3,156.49	3,787.80	
Farnham	1,064,987	62.62	1,308.90	102.39	236.57	177.04	1,887.52	1,258.34	1,468.06	1,677.78	1,887.52	2,306.97	2,726.41	3,145.86	3,775.04	
Frensham	51,000	58.65	1,308.90	102.39	236.57	177.04	1,883.55	1,255.69	1,464.98	1,674.25	1,883.55	2,302.11	2,720.68	3,139.24	3,767.10	
Godalming	622,205	68.31	1,308.90	102.39	236.57	177.04	1,893.21	1,262.13	1,472.49	1,682.84	1,893.21	2,313.92	2,734.63	3,155.34	3,786.42	
Hambledon	12,027	27.93	1,308.90	102.39	236.57	177.04	1,852.83	1,235.21	1,441.08	1,646.95	1,852.83	2,264.57	2,676.30	3,088.04	3,705.66	
Hascombe	7,742	46.08	1,308.90	102.39	236.57	177.04	1,870.98	1,247.31	1,455.20	1,663.08	1,870.98	2,286.75	2,702.52	3,118.29	3,741.96	
Haslemere	308,858	40.57	1,308.90	102.39	236.57	177.04	1,865.47	1,243.64	1,450.91	1,658.18	1,865.47	2,280.02	2,694.56	3,109.11	3,730.94	
Peper Harow	500	4.33	1,308.90	102.39	236.57	177.04	1,829.23	1,219.48	1,422.73	1,625.97	1,829.23	2,235.72	2,642.21	3,048.71	3,658.46	
Thursley	14,887	41.75	1,308.90	102.39	236.57	177.04	1,866.65	1,244.42	1,451.83	1,659.23	1,866.65	2,281.46	2,696.27	3,111.07	3,733.30	
Tilford	36,295	96.45	1,308.90	102.39	236.57	177.04	1,921.35	1,280.89	1,494.38	1,707.85	1,921.35	2,348.31	2,775.28	3,202.24	3,842.70	
Witley	210,268	62.02	1,308.90	102.39	236.57	177.04	1,886.92	1,257.94	1,467.60	1,677.25	1,886.92	2,306.23	2,725.54	3,144.86	3,773.84	
Wonersh	40,124	23.04	1,308.90	102.39	236.57	177.04	1,847.94	1,231.95	1,437.28	1,642.60	1,847.94	2,258.59	2,669.24	3,079.89	3,695.88	

£3,129,287

*A precept is the amount of money towns/parishes need to raise from Council Tax to fund their activities.

Town and parish precepts

Town/parish councils with a budget over £140,000 have to publish details about their spending plans. A precept is the amount of money towns/parishes say they need to raise from Council Tax to fund their activities.

	Estimated 2017/18 Expenditure		Estimated 2018/19 Expenditure	
	Gross £	Net £	Gross £	Net £
Farnham Town Council				
Professional services and administration	99,750	99,750	100,350	100,350
Governance and democratic services	167,500	165,500	157,250	157,250
Office and customer services	91,050	90,550	102,050	102,050
Grant funding	70,000	70,000	72,000	72,000
Planning and elections	73,700	73,700	83,200	83,200
Community development/community safety	103,800	98,300	100,800	95,300
Grounds services, open spaces and gardens	58,850	48,850	71,850	71,850
Farnham In Bloom	100,150	77,150	105,900	81,900
Allotments	15,850	(650)	18,150	1,650
Public conveniences	87,000	87,000	79,500	79,500
Town centre incl. Christmas lights and rural development	53,000	47,000	53,000	46,000
Tourism, events and farmers' market	186,576	130,575	189,325	121,825
Cemeteries	123,350	51,650	126,850	55,150
Public works loan repayment and interest	18,227	13,227	18,227	11,227
	1,248,803	1,052,602	1,278,452	1,079,252
Less Government local parish Council Tax support funding		(16,783)		(14,265)
PRECEPT	£1,248,803	£1,035,819	1,278,452	1,064,987
Haslemere Town Council				
Administration	118,475	114,393	125,027	121,475
Premises	16,125	16,125	15,480	15,480
External maintenance	28,477	28,477	30,614	27,184
Discretionary expenditure	54,858	43,039	81,033	67,714
Grants, special projects, use of balances	62,239	62,239	77,005	77,005
PRECEPT	£280,174	£264,273	329,159	308,858
Cranleigh Parish Council				
Office and general services	104,679	104,179	106,598	105,598
Recreation	165,076	146,473	167,283	149,483
Village Hall	54,405	29,760	52,687	28,042
Cemetery	56,947	31,687	59,849	33,849
Other	26,374	26,374	28,685	28,685
(Use of)/contribution to balances		(4,614)	21,100	17,368
Compensatory grant		(20,292)	0	(18,036)
PRECEPT	£407,481	£313,567	436,202	344,989
Godalming Town Council				
Administration	433,560	396,077	450,507	414,697
Civic expenses	15,680	15,680	23,848	23,848
Community buildings	96,704	9,994	91,026	(18,207)
Other land and property (incl allotments)	14,950	2,650	41,496	39,296
Festivals and markets	17,295	2,800	31,040	6,040
Christmas lights	45,880	39,000	45,880	39,000
Neighbourhood Plan	3,668	0	7,590	0
Museum	52,225	52,225	118,555	57,771
Debt charges	52,470	52,470	59,760	59,760
PRECEPT	£732,432	£570,896	869,702	622,205
Witley Parish Council				
Office and general services	132,068	131,468	108,548	108,298
Recreation, land and property management	72,350	64,694	91,212	82,499
Neighbourhood Plan and other special projects	19,185	15,360	38,042	38,042
Cemetery and closed churchyard	9,701	(2,299)	11,283	(717)
Grants and donations	6,000	6,000	4,000	4,000
Compensatory and other grant	0	(16,857)	0	(15,029)
Use of reserves/balances			0	(6,825)
PRECEPT	£239,304	£198,366	253,085	210,268

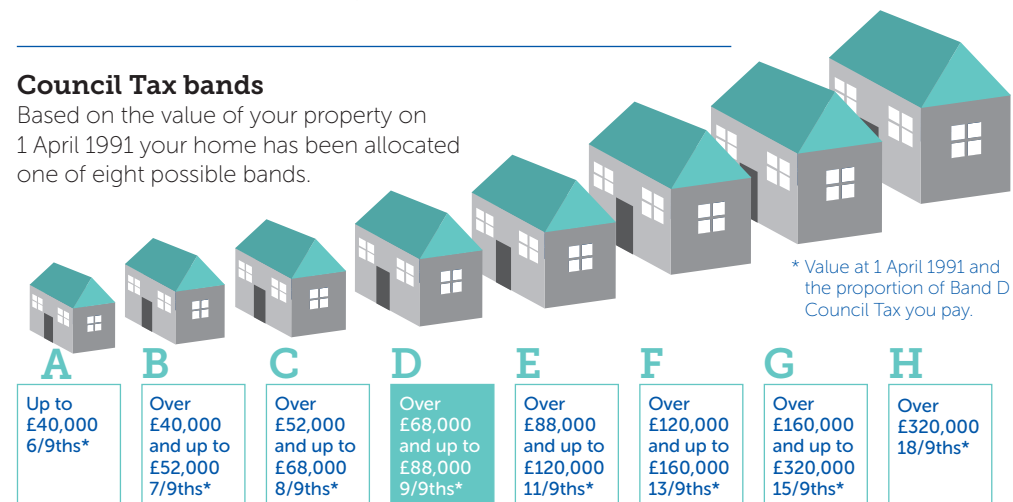
Council Tax valuation bands

Most homes, rented or owned, are subject to Council Tax. There is one bill per home, whether it is a house, bungalow, flat, maisonette, mobile home or house boat. Each home is allocated to one of eight bands from A to H according to its open market capital value at 1 April 1991. Your Council Tax bill states which band applies to your

dwelling or you can find this information on www.gov.uk/council-tax-bands. Where a property has been improved, the band may be increased following a change of ownership. In these cases the Listing Officer will review the band after the property has been sold. The Valuation Office Agency's website: www.voa.gov.uk shows those properties that are subject to a review.

Council Tax bands

Based on the value of your property on 1 April 1991 your home has been allocated one of eight possible bands.



Appealing against a banding

All appeals about banding should be made in writing to: 2nd Floor, 1 Francis Grove, Wimbledon, London, SW19 4D

Common grounds for appeal are:

- after demolition
- conversions of houses to flats
- physical changes in the locality affecting value.

You can also appeal within six months of:

- a band change to your property made by the Listing Officer.
- a band change to a similar property to yours made by the tribunal
- when you become the taxpayer in respect of a dwelling for the first time.

More detailed information is available from the Listing Officer at the address shown above

or by telephone **03000 501501** or online: www.voa.gov.uk

You may also appeal if you consider that you are not liable to pay Council Tax, for example, because you:

- are not the resident or owner
- your property is exempt
- Waverley has made a mistake in calculating your bill.






If you wish to appeal on the above grounds, you must contact us so that we have an opportunity to reconsider the case.

Making an appeal does not allow you to withhold payment of Council Tax. If your appeal is successful you will be entitled to a refund of any overpaid Council Tax.

Contact us

Waverley Borough Council,
The Bury's,
Godalming,
Surrey,
GU7 1HR
01483 523 333

Follow us:

-  twitter.com/waverleybc
-  facebook.com/waverleybc
-  linkedin.com/company/waverley-borough-council
-  youtube.com/WaverleyBorough
-  instagram.com/yourwaverley