





10% OFF  
PER PERSON\*



Alice Holt Forest, Nr Farnham

Book at **goape.co.uk**  
or call 0845 519 0761 quote **FARNGU14**

\*Offer valid until 30th November 2014, excluding Saturdays at Alice Holt Tree Top Adventure only  
Participation and supervision ratios apply - please see the website.

# Welcome

Welcome to the historic town of Farnham.

Farnham has a magnificent history: Stone Age, Roman and Saxon dwellings have been found here, **Britain's first cistercian monastery** was built here and the fine **12th century castle** standing above the town has welcomed visitors for the last 800 years, including most monarchs of England from King John to Queen Victoria.

Farnham offers contemporary visitors and residents a chance to enjoy quintessential England, just an hour from the international city of London. This pretty Georgian market town has quaint cobbled streets to explore, a multitude of independent shops and a rich arts scene all nestled in the beautiful Surrey countryside.

This mix of heritage and landscape has inspired writers for years such as William Cobbett, Sir Arthur Conan Doyle and J.M. Barrie. The inventor John Henry Knight, Britain's first two seater petrol motor car builder, lived here and other notable historical figures including Florence Nightingale stayed regularly in Farnham. Today the **University for the Creative Arts** forms a hub for new talent, with 2,000 students creating cutting edge fashion, art, video and photography.

The local **Bourne Woods** has seen Farnham land a new role as a leading film location, with major blockbusters Gladiator, War Horse, Robin Hood, Snow White and the Huntsman all choosing to use the Forestry Commission's woodland for their backdrops.

With great local food, accessibility, calm open spaces, interesting walking trails and comfortable quirky places to stay, Farnham can offer you the perfect base from which to experience an enjoyable few hours, exciting few days or longer. This guide aims to whet your appetite with ideas and inspiration. You can also find up to date events, offers and leaflets to download online at **www.farnham.gov.uk**.

As William Cobbett (1763-1835) the famous writer and Journalist, author of Rural Rides and founder of Hansard, said 'Farnham is the neatest town in England, and, I believe, in the whole world'.



## Contents

Welcome .....	1
Website information .....	2
Getting to and around Farnham..	3
Farnham's villages .....	4
History and heritage .....	6
Art and culture .....	10
Shopping .....	14
Farnham Town Map .....	18
Farnham for families.....	20
Events and festivals .....	22
Explore .....	24
Green open spaces .....	24
National Trust .....	26
Local churches .....	26
Waterways.....	26
Film locations .....	27
Sport and leisure .....	28
Surrounding villages .....	30
Eating and drinking.....	32
Where to stay .....	34
Hotels .....	34
Self catering .....	36
Bed and breakfast .....	36

Brochure produced by Acorn Design – 01428 751698  
www.acorndesign.co.uk.

Further information available online – website/ Facebook/ Twitter

Use this guide for inspiring places to visit and comfortable places to stay, and for more information on shopping, activity ideas, up to date events and itineraries visit [www.farnham.gov.uk](http://www.farnham.gov.uk) or call Farnham Town Council tel: 01252 712667.

To find out what others are enjoying and recommending in Farnham see our Facebook page [www.facebook.com/farnhamofficial](http://www.facebook.com/farnhamofficial) or follow our Twitter feed #farnhamofficial; feel free to upload your photos and feedback.



Local internet access

Most accommodation providers have Wi-Fi but if you are out and about pop into Farnham Library to use their free computers. The Bush Hotel and the Bishop's Table Hotel also offer free Wi-Fi, and you can even get free access in Gostrey Meadow courtesy of Wise & Co.

**Farnham Library**  
Vernon House, 28 West Street,  
Farnham, Surrey GU9 7DR  
**T:** 01483 543599 **W:** [surreycc.gov.uk](http://surreycc.gov.uk)  
Open: Mon 9am-6pm, Tues and Thurs 9am-7pm, Sat 9am-5pm

**Information Points**  
Farnham Maltings, Bridge Square  
Mercure Farnham Bush Hotel  
Farnham Library, West Street  
Town Council Offices, South Street

The Rural Life Centre is a museum of past village life covering the years from 1750 to 1960. It is set in over ten acres of garden and woodland and housed in purpose-built and reconstructed buildings including a chapel, village hall, cricket pavilion and schoolroom.

Displays show village crafts and trades such as wheelwrighting, bakers, vets and many more. An historic village playground provides entertainment for children as does a preserved narrow gauge light railway which operates on Sundays. There is also an arboretum with over 100 species of trees from around the world.

Send a self-addressed envelope for a diary of events.



Reeds Road, Tilford, Farnham GU10 2DL  
**t. 01252 795571 – [info@rural-life.org.uk](mailto:info@rural-life.org.uk)**



**Admission:** (Premium Events excepted)  
Adult £8.50. Children £6.00  
Concession..students..OAP's £7.50  
Family (2 adults + accompanying children) £26.00  
Groups (20 or more) deduct 10% from the above prices  
Thursday & Friday 10 or more group rate deduct £1.50 from standard prices.  
**Opening Times:**  
Mar - Oct: Weds - Sun & BH 10:00 - 17:00  
Winter Season: Weds & Sun 11:00 - 16:00

Getting to/ getting around/ parking

Farnham is perfectly located, one hour by train south of London and approximately one hour north of the south coast. Accessible by train, car, plane or on foot, whichever your preferred method of transport you can reach Farnham with ease.

By air

London's Gatwick and Heathrow airports are both within one hour's drive of Farnham. From Heathrow, take the coach to Woking, Surrey and transfer to an Alton train for the short 20 minutes journey to Farnham. National Express runs a convenient coach service from London Victoria to Farnham, ideal for those arriving on the Gatwick Express from Gatwick.

By train

Farnham enjoys a direct service to and from London Waterloo and Alton every half an hour during the week. The train station is just 5-10 minutes' walk from the town centre, located just south of the A31. For details on train times call 08457 484950 or see [www.nationalrail.com](http://www.nationalrail.com). There is a taxi rank at the railway station and a second on Castle Street, which is a ten minute walk from the station.

By bus

Farnham is fairly well served with a network of bus routes to and from surrounding towns and villages. For details of the routes and timetables call 0871 200 22 33 or see [www.traveline.org.uk](http://www.traveline.org.uk), [www.stagecoachbus.com](http://www.stagecoachbus.com) or search buses at [www.surreycc.gov.uk](http://www.surreycc.gov.uk) Hoppa delivers a low cost and efficient community transport service for the people of Waverley and Farnham. Tel: 01428 681701 [www.hoppa.org.uk](http://www.hoppa.org.uk).

By car

Farnham is located just off the A31, A3, M3 and A287. The historic town was not designed with cars in mind so park at your first opportunity and explore by foot. There are

nine pay and display car parks, including two park and ramble riverside car parks for just £3 per day. See map 7 and 8. All car parks have disabled parking spaces.

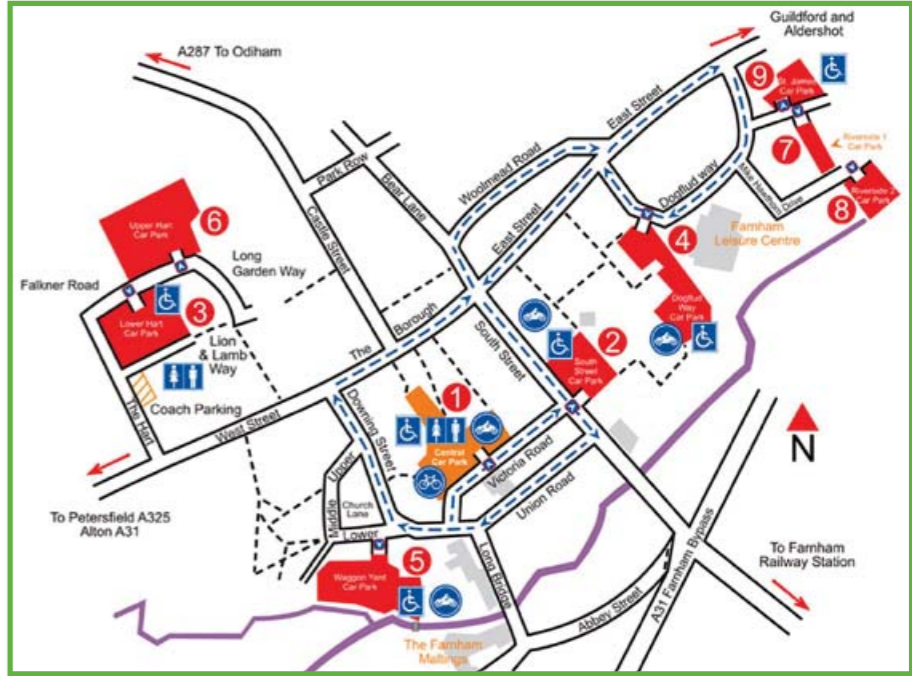
By coach

For details on routes from London and Portsmouth to Farnham see [www.nationalexpress.com](http://www.nationalexpress.com). Free coach parking for groups is located off The Hart.

By bicycle

Whether you discover the 10 mile section of the North Downs Way from Guildford to Farnham by bike or explore St Swithun's Way from Alton, there are miles of possible cycle routes to and from Farnham to enjoy. For further details on interesting routes, see the map in the centre pages of this book or visit [www.farnham.gov.uk](http://www.farnham.gov.uk).

Farnham parking map



– Map provided by Waverley Borough Council

# Farnham's villages

Farnham and its surrounding villages offer a quintessential English experience. With village shops and country pubs to discover, vibrant local communities and events and beautiful surroundings to enjoy, uncover village life at your own pace.

## Badshot Lea

Located between Aldershot and Farnham, the village of Badshot Lea boasts a fine church, a large garden centre with a popular café and Badshot Lea big and small ponds offer some excellent fishing opportunities. **Badshot Lea Nature Reserve**, the former Farnham quarry, is an exciting new project and feature for the area after years of mineral working. [www.farnhamanglingsociety.com](http://www.farnhamanglingsociety.com), [www.badshotleacommunity.co.uk](http://www.badshotleacommunity.co.uk).

## The Bourne

The Bourne is the link between the protected, picturesque countryside south of the town and the town centre. For many centuries the Bourne was the common to the Manor of Farnham before gradually squatters began to set up residence in turf huts. It is bordered by woodland and common land, with footpaths along The Bourne Valley that provide an important network of corridors for both residents and wildlife alike. [www.thebourne.org.uk](http://www.thebourne.org.uk).

Today The Bourne does retain the feeling of a vibrant village. There are four shops, including a post office, and a large village green on which there is an annual **Bourne Show**, held on the third Saturday in July. It is a traditional show with stalls, competitions, dog shows, races for children, fancy dress, vintage/classic cars, floral displays and refreshments. See [www.thebourneshow.com](http://www.thebourneshow.com).



– Hale Carnival

## Hale and Heath End

North of the town centre, where Mesolithic settlements have been found, is the area of Hale. With a successful **annual carnival** held on the first Saturday in July on the recreation ground, this green space is a focal point for the village. There is also a scout hut, the Hale Institute Village Hall and a Working Men's Club. The **History of Hale Project** holds regular coffee mornings on the last Saturday of the month (with exception of December) in Hale Village Hall, 10-12 noon and all are welcome. Opposite, The Ball and Wicket public house is a traditional village pub, and the nearby Alfred pub holds an annual beer festival.

As the Army expanded in neighbouring Aldershot, the village of Heath End was formed. **The Rowhill Nature Reserve** makes a natural boundary between the two towns: this ancient site is good for walking and provides a precious haven for wildlife and flora. The area is also home to pitches for the Aldershot and Farnham Hockey Club on Monkton Lane. [www.halehistoryproject.co.uk](http://www.halehistoryproject.co.uk).

## Rowledge

To the south of Farnham, on the county border of Surrey with Hampshire, the village of Rowledge has gradually developed from the original open fields to an attractive settlement with a thriving centre made up of a butcher, post office and convenience store, newsagent, hairdresser, garage, and two public houses (one straddling the county border where Surrey meets Hampshire). The village green hosts a very popular fayre on the second bank holiday in May. [www.rowledgevillagefayre.org.uk](http://www.rowledgevillagefayre.org.uk).

Rowledge Village Hall hosts a range of regular events including the Friday morning Coffee Spot [www.rowledgevillagehall.com/whatson](http://www.rowledgevillagehall.com/whatson) This lovely village borders the fantastic **Alice Holt** woodland and trails. **Birdworld** is also nearby to enjoy. [www.rowledgevillagehall.co.uk](http://www.rowledgevillagehall.co.uk).



– Rowledge Village Sign

## Weybourne

Located to the east of Farnham, Weybourne was once home to **John Henry Knight**, inventor, engineer and local landowner. He is famous for building the first horseless carriage for two people made in England in 1895.

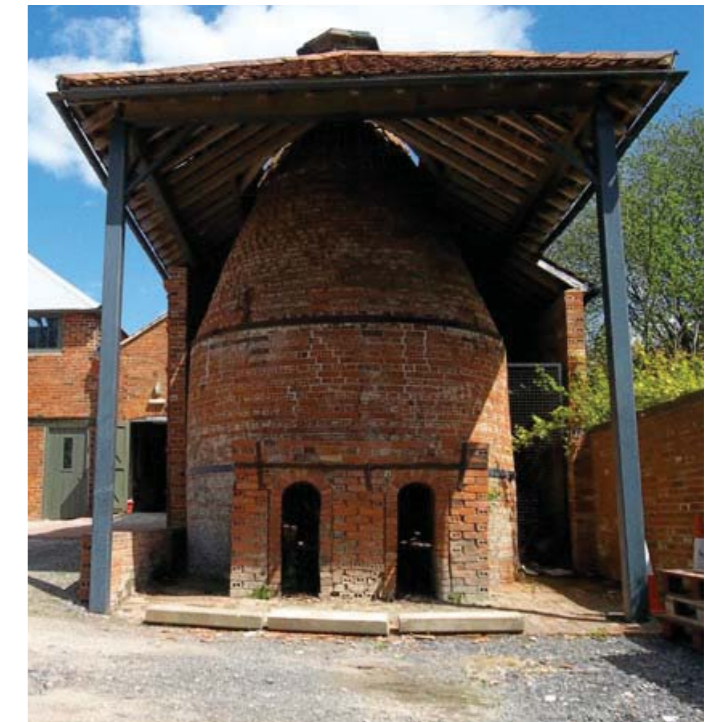


– Badshot Lea Church

## Wrecclesham

On the southern fringes of Farnham, the village of Wrecclesham has a recreation ground which hosts the annual village fair, held in late June, plus cricket, football, rugby and tennis clubs. The village also offers country pubs, including the traditional Bat and Ball with its annual charity Bat and Ball Beer, Cider and Music Festival supported by The Hedgehogs held during the second weekend in June. **Wrecclesham Community Centre** has recently been refurbished and is a focal point for local clubs and activities.

The village of Wrecclesham is best known for its pottery. To this day it is home to one of the best preserved examples of a working Victorian country pottery left in England. **Farnham Buildings Preservation Trust** bought the site in 1998 and now under private ownership, **Farnham Pottery** is home to two ceramics groups, West Street Potters and 318 Ceramics, producing pottery there today. [www.weststreetpotters.co.uk](http://www.weststreetpotters.co.uk), [www.318ceramics.co.uk](http://www.318ceramics.co.uk).



– The Bottle Kiln, Farnham Pottery, Wrecclesham © Jitka Schacherlova

# History and Heritage

Farnham has a magnificent history: Stone Age, Roman and Saxon dwellings have been found here, Britain's first cistercian monastery Waverley Abbey was built here and the fine 12th century castle standing above the town has welcomed visitors for the last 800 years.

The origin of Farnham as a successful market town comes from its strategic position between London, Winchester and the coast, perfect for trade. The cereal and wool trades boomed here in the 17th century, when up to 1,000 wagons a day would arrive in Farnham, and in the 18th century the growth of hops guaranteed the town's continued prosperity.

Farnham continued to change and develop with the arrival of the railway in 1849 and the construction of the army camp at nearby Aldershot in 1853.

Held on the first Sunday of the month, **guide-led walking tours** of Farnham introduce a wealth of historical information (Tel: 01252 718119). The self-guided **Heritage Trail of Farnham** is a wonderful way to discover more about the history of Farnham.

Visit the **Museum of Farnham** for a vast range of artefacts from the town, including a mammoth's tusk and the skull cap worn by Charles I during his stay at Vernon House in West Street, which is now home to **Farnham Library**. Just out of town, the **Rural Life Centre** in Tilford offers visitors a wonderful showcase of rural life, with regular events including Kids' Thursdays and courses in traditional crafts and a unique display of the Polish community in the war.

What is believed to be the first ever two-minute silence, now observed annually on Armistice day, was initiated by J. Alfred Eggar, an estate agent of Castle Street, in 1916.



– Waverley Abbey © C Whitehouse

## Genealogy

Farnham Town Council hold burial records dating back to the 1870s. If you are researching your family tree see [www.farnham.gov.uk](http://www.farnham.gov.uk) to find information. Tel: 01252 712667.



## Army Medical Services Museum

Keogh Barracks, Ash Vale,  
Aldershot, Hampshire GU12 5RQ  
**T:** 01252 868612 **F:** 01252 868832  
**W:** [ams-museum.org.uk](http://ams-museum.org.uk)  
Open: Mon – Fri 9.30am – 3.30pm  
(excluding Bank Holidays)

## Aldershot Military Museum

Queen's Avenue, Aldershot  
Hampshire GU11 2LG  
**T:** 0845 603 5635  
**W:** [hants.gov.uk/aldershot-museum](http://hants.gov.uk/aldershot-museum)

## Guildford Cathedral

Stag Hill, Guildford, Surrey GU2 7UP  
**T:** 01483 547860  
**W:** [guildford-cathedral.org](http://guildford-cathedral.org)

## Rural Life Centre

Reeds Road, Tilford, Farnham GU10 2DL  
**T:** 01252 795571 **F:** 01252 795571  
**E:** [info@rural-life.org.uk](mailto:info@rural-life.org.uk)  
**W:** [rural-life.org.uk](http://rural-life.org.uk)  
Open Summer: Wed – Sun 10am – 5pm  
(plus Bank Holiday Mondays)  
Open Winter: Sun & Wed 11am – 5pm

## William Cobbett Society

**W:** [williamcobbett.org](http://williamcobbett.org)



– Rural Life Centre

## Farnham Castle

Following recent renovation and refurbishment work, Farnham Castle, set in stunning gardens with manicured lawns, combines 12th Century history with 21st century style, offering a truly unique setting for private celebrations and meetings. The Norman keep, a secluded ancient monument, is free to visit and offers fabulous views over the town and Surrey countryside.

## Farnham Castle

Castle Street, Farnham, Surrey GU9 0AG  
**T:** 01252 721194  
**E:** [info@farnhamcastle.com](mailto:info@farnhamcastle.com)  
**W:** [farnhamcastle.com](http://farnhamcastle.com)



## Museum of Farnham

The museum was founded in 1961 to provide the Farnham community with a collection dedicated to the history of the local area. It is housed in an elegant Grade I listed Georgian townhouse which still retains many original features, including a beautiful walled garden perfect for picnics.

## Museum of Farnham

Willmer House, 38 West Street  
Farnham, Surrey GU9 7DX  
**T:** 01252 715094  
**E:** [museum@farnhammaltings.com](mailto:museum@farnhammaltings.com)  
**W:** [farnhammaltings.com/museum](http://farnhammaltings.com/museum)  
Open: Tue-Sat 10am-5pm



acorn | design

Equally comfortable working with local business and international brands, Acorn Print and Design deliver innovative and effective communication solutions for every client.

t | 01428 751698  
w | acorndesign.co.uk  
t | @acorn\_design

From the highest quality lithographic and cutting edge digital print technology, to graphic and web design, we have the expertise to make your ideas a reality.

## Farnham Minibuses

### TRAVEL SOLUTIONS FOR SMALL GROUPS

Let our experienced drivers get you where you want to go in comfort. Our minibuses look the part, have sixteen comfortable passenger seats, easy entrance, air conditioning, tinted and double glazed windows, free wi-fi and large luggage hold.



### NOT YOUR STANDARD MINIBUS!

T: 01252 724010

E: sales@farnhamminibuses.co.uk

W: farnhamminibuses.co.uk

Farnham Minibuses is brought to you by Farnham Coaches established nearly 60 years ago and part of the long established and family-owned Safeguard Coaches group.

## Trails and footsteps worth following!

Farnham has a network of trails and footpaths by which to explore its unique mix of history and beautiful countryside.

### Heritage Trail

You can discover Farnham's historic treasures, from the unusual groups of seven steps leading to the castle built for the blind bishop in 1524, to where King Charles I stayed on West Street. You can also see William Cobbett's tomb at **St Andrew's Church** on the circular walking Heritage Trail with numbered plaques around central Farnham. Pick up a free map from an information point or download one from our website:  
[www.farnham.gov.uk/heritagetrail](http://www.farnham.gov.uk/heritagetrail).



### St Swithun's Way

St Swithun's Way is a 34 mile track running between Winchester, the capital of Saxon England, and historic Farnham. Whilst not tracing the original route of the Pilgrim's Way, as much of this is now the A31, St Swithun's Way starts at Winchester Cathedral and weaves its way east through the picturesque Itchen Valley along the path of the River Wey to reach Farnham.

St Swithun's Day, if thou dost rain,  
For forty days it will remain:  
St Swithun's Day, if thou be fair,  
For forty days 'twill rain nae mair.

### North Downs Way

Continue in the footsteps of pilgrims on an inspirational journey from Farnham to Canterbury and the White Cliffs of Dover, through a beautiful landscape rich in heritage.  
[www.nationaltrail.co.uk/north-downs-way](http://www.nationaltrail.co.uk/north-downs-way)  
[www.surreyhills.org](http://www.surreyhills.org).



– St Andrew's Church © R Atkinson

## Farnham, craft town and its craft trail

The roots of Farnham's engagement with craft can be dated back to the time when the town exported white clay to the Romans. In the 16th century, potteries in Farnham were major suppliers of pottery to London but its real emergence as a town with a leaning towards craft was in the Victorian era. Absorb the rich craft heritage in Farnham by visiting the key venues (see the town map for location details).

**Farnham Pottery**, with its reputation for the distinctive style of work known as Greenware.

**The University for the Creative Arts** off West Street.

**Farnham Maltings**, an arts centre that offers stimulating year round exhibitions featuring young artists as well as world class craft makers. Artists studios are also located in this unique venue, enabling the development of craft in the town.

**The New Ashgate Gallery** offers a diverse range of craft work for sale and is especially focused on creating opportunities for emerging makers. Craft across the centuries can be seen and researched in the **Museum of Farnham** and at the lovely collections of the **Crafts Study Centre**.



## The PACKHOUSE

STYLISH VINTAGE LIVING

- Antique & Vintage Finds
- Furniture & Lighting
- Home accessories & Gifts
- Bespoke Kitchens
- Culinary Concepts Showroom
- Hair & Beauty Salon
- Café Fig
- Open 7 days a week
- Home delivery

Now Open from 9.30 Mon- Fri

[www.packhouse.com](http://www.packhouse.com)

@thepackhouse

ThePackhouseFarnham

The Packhouse, Hewett's Kilns,  
Tongham Road, Runfold,  
Farnham, Surrey GU10 1PJ  
Tel: 01252 781010



# Art and culture

Farnham is the arts hub of the South East, now credited with the accolade of Craft Town England.

Art, craft and culture all flourish in Farnham, with its vibrant creative community and wealth of contemporary art galleries.

Be inspired by attending one of three craft festivals held at the excellent community arts venue, the **Farnham Maltings**; spot new talent at the **University for the Creative Arts** (UCA); pick up a piece of pottery at **Grayshott Pottery**, with its eclectic gift shop, café and free daily tours or just enjoy the delights on offer at the **New Ashgate Gallery**, the **James Hockey and Foyer Galleries**, the **Crafts Study Centre** or art within the landscape at the **Sculpture Park** in Churt.

## Farnham Maltings

Set in the heart of Farnham, Farnham Maltings is a creative organisation that works with artists and communities to encourage people to make, see and enjoy the best art possible. The Maltings offers a diverse programme of events and activities, including theatre, cinema, craft, music, comedy and workshops.

**“It is the over 400,000 people visiting the Maltings each year, from people living in the same street to those that have travelled from across the Country and, sometimes, internationally, that make the Maltings feel uniquely special.”** – Gavin Stride, Director

### Farnham Maltings

Bridge Square, Farnham, Surrey GU9 7QR

**T:** 01252 745444

**E:** [info@farnhammaltings.com](mailto:info@farnhammaltings.com)

**W:** [farnhammaltings.com](http://farnhammaltings.com)

Box Office Open: Mon & Tue 9am – 5.30pm,  
Wed – Fri 9am – 7pm, Sat 10am – 2pm



## University for the Creative Arts

A hub of creativity, UCA Farnham has over 2,000 students studying a wide range of creative arts subjects including fine art, photography, textiles, crafts, film, graphics, journalism and advertising. It boasts on-campus accommodation, an extensive library, art shop, refectory, galleries and purpose-built facilities with specialist workshops. The university has two additional areas on Falkner Road open to the public:



## Craft Study Centre

The Crafts Study Centre is a specialist University museum and research centre open free to the public. The Centre's acclaimed collections include modern and contemporary calligraphy, ceramics, textiles, furniture and wood as well as makers' diaries, notes and photographs. Inspiring exhibitions and talks by leading artist-makers are held year round, alongside an annual academic symposium.

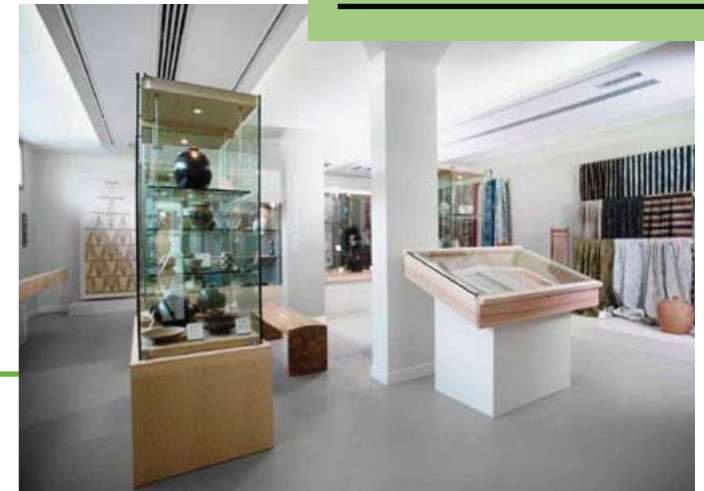
## The James Hockey Gallery

The James Hockey Gallery is a public exhibition space. The aim is to present work of lasting educational importance which will invite participation and contribute to the public and professional debate. Respect for the specialist appreciation of disciplines, media and techniques remains vital to the promotion of the arts at the Galleries.



## New Ashgate Gallery

For more than 50 years, the New Ashgate Gallery has been a window into arts and crafts, supporting artists and makers. It is dedicated to championing the best contemporary art and craft and to provide an unparalleled resource in Farnham, Surrey and beyond.



### UCA Farnham

Falkner Road, Farnham, Surrey GU9 7DS

**T:** 01252 722441

**W:** [ucreative.ac.uk](http://ucreative.ac.uk)

### Craft Study Centre

**T:** 01252 891450

**W:** [csc.ucreative.ac.uk](http://csc.ucreative.ac.uk)

Open: Tue–Fri 10am–5pm, Sat 10am–4pm

### The James Hockey Gallery

**T:** 01252 722441

**E:** [rhyllton@ucreative.ac.uk](mailto:rhyllton@ucreative.ac.uk)

**W:** [ucreative.ac.uk](http://ucreative.ac.uk)

Open: Mon–Fri 10am–5pm, Sat 11am–4pm

### New Ashgate Gallery

Waggon Yard, Farnham, Surrey GU9 7PS

**T:** 01252 713208

**E:** [info@ashgategallery.org.uk](mailto:info@ashgategallery.org.uk)

**W:** [ashgategallery.org.uk](http://ashgategallery.org.uk)

Open: Tue – Sat 10am – 5pm

### Farnham Pottery

The Farnham Pottery is one of the best-preserved examples of a Victorian country pottery in England. Established in 1873 by local potter Absalom Harris, it operated for over 130 years and was run by five successive generations of the Harris family. Many well-known local potters learnt their craft at the Pottery.

Currently undergoing an extensive sympathetic renovation, The Pottery will provide inspiring accommodation for a range of craft ventures, with the primary focus on ceramics-based organisations, and will include public access space and exhibition areas, all with an emphasis on community involvement. The Farnham Pottery is home to three craft organisations:

### Farnham Sculpture

A group of wood and stone carvers, offering well equipped studio space and support for both experienced and novice carvers.

### West Street Potters

A steadily growing, independently run membership organisation that provides opportunities for people of all abilities to experience ceramics through classes, workshops and community events.

### 318 Ceramics

A new charitable creative organisation, which provides education and support to all makers, from complete beginners through to professionals. Offering a programme of skills-based courses, workshops and masterclasses, all 318 Ceramics tutors are experts in their respective fields, and many have strong international reputations in both teaching and practice. There are four dedicated studios for makers and a growing programme of community engagement projects. 318 Ceramics offers open access studios and a hireable craft studio.



### The Farnham Pottery

Quennells Hill, Wrecclesham,  
Farnham, Surrey GU10 4QJ  
**W:** farnham-pottery.co.uk

### West Street Potters

**E:** weststreetpotters@btinternet.com  
**W:** weststreetpotters.co.uk

### Farnham Sculpture

**E:** liz\_thomas118@yahoo.co.uk  
**W:** farnhamsculpture.4t.com

### 318 Ceramics

**E:** info@318ceramics.co.uk  
**W:** 318ceramics.co.uk



### The Sculpture Park

The Sculpture Park is a wonderful all year sculpture exhibition with over 300 artists showcasing 600 sculptures. Almost everything is for sale and as a result the exhibits are forever changing so there is always something new to discover.

Sited within ten acres of stunning arboretum and wildlife inhabited water gardens that have been developed over the years, with a series of landscaping projects and the introduction of thousands of new plants, bulbs and specimen trees. Taking advantage of the natural contours of the rolling Surrey Hills has resulted in the perfect haven for the display of sculpture, with over two miles of paths meandering through mixed heathland and woodland in a natural valley enhanced by three lakes fed by two natural springs.

### The Sculpture Park

Jumps Rd, Churt, Farnham, Surrey GU10 2LH  
**T:** 01428 605453

**W:** thesculpturepark.com  
Open: Everyday 10am-5pm

## Further afield...

### Watts Gallery

Enjoy a perfect day at a hidden gem nestled in the Surrey Hills. Explore paintings and sculptures at Watts Gallery, treat yourself to lunch or a cream tea in the Tea Shop. Stroll to Watts Chapel, be guided around Limnerslease, the artists' home and studio, then explore the shop, full of unique gifts.



### Watts Gallery

Watts Gallery, Down Lane,  
Compton, Guildford, Surrey GU9 1DQ  
**T:** 01483 810285  
**E:** info@wattsgallery.org.uk  
**W:** wattsgallery.org.uk  
Open: Tue – Sun 11am – 5pm  
Closed: Mon (Except Bank Holidays)

### The Lightbox

The Lightbox in Woking is an award winning gallery and museum. It hosts a wide range of free exhibitions which change regularly and is home to the museum Woking's Story. The canalside Café has a delicious range of lunches, cakes and snacks and the Gift Shop has a unique range of gifts that are perfect for presents.

### The Lightbox

Chobham Road, Woking, Surrey GU21 4AA  
**T:** 01483 737800  
**E:** info@thelightbox.org.uk  
**W:** thelightbox.org.uk  
Open: Tue–Sun 10.30am – 5pm  
Sun 11am–5pm

### Other art and culture organisations:

#### Farnham Society

Promoting the highest standards of planning and architecture in Farnham.

**T:** 01252 781801  
**W:** farnhamsociety.org.uk

#### Farnham Public Art Trust

Preserving Farnham's heritage  
**E:** info@farnhampublicarttrust.co.uk  
**W:** farnhampublicarttrust.co.uk

#### Surrey Artists' Open Studios

**W:** surreyopenstudios.org.uk

## New Ashgate Gallery and shop

The destination to view and buy the best of contemporary art and craft. Championing artists and affordable art and craft in Farnham, Surrey and beyond.



Katharina Klug



Ruta Brown



Jack Doherty

New Ashgate Gallery  
Waggon Yard, Farnham GU9 7PS  
**e:** gallery@newashgate.org.uk  
**t:** 01252 713208  
**w:** newashgate.org.uk



@newashgate



facebook.com/newashgate  
Tue-Sat, 10am-5pm. Free entry

# Shopping

## Farnham's roots are as a market town

This origin has expanded over time and though bartering is less prevalent these days, the commercial ethos remains in the town. There is a vast array of shops and products to discover catering for everyone's tastes. From independent gems, including a milliners (**Beverley Edmonstone**), jewellery specialists (**Andre Noir**) and musical experts at the renowned **Guitar Village** to many of the better known high street brands. To search a retail directory of Farnham visit [www.farnham.gov.uk](http://www.farnham.gov.uk). The town has several distinct shopping areas:

### West Street

West Street hosts a variety of quality retailers including Farnham's own family-run department store, **Elphicks**, founded in 1881.



– Farnham Museum

Elphicks is a long standing part of the local community, trading in Farnham for over 130 years. Buyers work hard to source ranges that are a little bit different but remain competitively priced.

### Lion and Lamb Yard

This lovely cobbled car-free street has a perfect selection of luxury household shops, traditional country clothing, bespoke jewellery and book shops surrounded by excellent independent cafes which are perfect for people watching.



### Downing Street

The historic Downing Street leads into Farnham from the south. Home to a butcher, a baker and candle-stick maker, well hardware store. This charming street is also home to a fifth-generation greengrocer, traditional sweet shop, exquisite independent clothes shops (**John Goodridges** and **Mulberry Silks**) and even a ceramics café.



### Castle Street

The castle in this beautiful Georgian street offers a wonderful backdrop to a wealth of eateries for breakfast or candlelit dinner.



– Castle Street © H Lambden

### East Street

East Street offers a wealth of beauty options plus individual shops selling bicycles, sports equipment, and even model hobby kits.



### The Borough

The Borough is a thoroughfare of high street options with **Boots** and **Breaking Free**, **White Stuff** and **WH Smith**.



## Specialisms in Farnham

### Antiques and vintage

Farnham is rich in antiques for sale in wonderful settings. **The Bourne Mill** or **The Antiques Warehouse** are unique in their offerings from multiple sellers and collectors and both make an enjoyable afternoon out with their own tea shops on site. If it is vintage you are after then **The Packhouse** is a one-stop shop for customers in search of interior inspiration, seasonal gifts, furniture, lighting, upholstery and vintage and antique finds.

### Household

From stores such as **Traditional Furnishings** to contemporary options from **Appassionato Interiors** or **Vale Furnishers**, Farnham offers a fabulous range of furniture, materials, luxurious lighting and accessory choices to browse and embellish your home.

### Children

To entertain those little cherubs visit **Enchanted Wood** toy shop on East Street for a wide range of toys or the local garden centres. **Rainbow Wood**, also on East Street, is a fun and inspiring children's bunk bed shop.

### Local produce

To pick up a jar of something sweet and local try **Hones & Sons**, greengrocers on Downing Street, the **Country Market** at the United Reformed Church on Fridays or **Frensham Garden Centre**.

### Books

For the perfect page turner visit **Waterstones** in the Lion and Lamb Yard, **Oxfam's** second hand book shop on East Street, and even **Underwater World** at Birdworld.

## Local markets

Farnham is a market town at heart. With an award winning local farmers' market on the fourth Sunday of each month, a country market on Fridays at the **United Reformed church** in South Street and the **Farnham Maltings** monthly market on the first Saturday of the month.

"on the 4th Sunday of every month I attend the farmers' market with my cakes (Pure Delights'). It's a great venue with easy parking and customers who have become friends and a good breakfast is also guaranteed...my favourite monthly market...well worth a visit..."



### Country market

Farnham United Reform Church,  
South Street, Farnham, Surrey GU9 7QU  
**W:** country-markets.co.uk  
Open: Fri 9.30am-11am

### Farmers' market

Fourth Sunday of every month  
Central car park, off Victoria Rd GU9 7RB  
**T:** 01252 712667  
**W:** farnham.gov.uk  
Open: 10am- 1.30pm

### The Antiques Warehouse

Badshot Farm, St George's Road,  
Runfold, Farnham, Surrey GU10 1PL  
**T:** 01252 317590  
**E:** hilary2606@gmail.com  
**W:** theantiqueswarehouse.com  
Open: 10.30am – 5.30pm

### The Packhouse

The Packhouse, Hewett's Kilns,  
Tongham Rd, Runfold, Surrey GU10 1PJ  
**T:** 01252 781010  
**W:** packhouse.com  
**E:** info@packhouse.com  
Open: Mon – Fri 10.30am – 5.30pm,  
Sat – Sun 10am – 5.30pm

### Honeypot Antiques Centre

Milford Road, Elstead, Nr Farnham,  
Surrey GU8 6HP  
**T:** 01252 703614  
**W:** honeypotantiques.co.uk  
Open: Mon-Sat 10am-5pm  
Sun 11am-5pm

### Bourne Mill Antiques Centre

39-43 Guildford Rd, Farnham,  
Surrey GU9 9PY  
**T:** 01252 716663  
**W:** bourne-mill-antiques.co.uk  
Open: Mon-Sun 9.30am-4pm

### Farnham Maltings market

From antiques and jewellery, to craft and local handmade produce, restored furniture and unique cards.  
Bridge Square, Farnham, Surrey GU9 7QR  
**T:** 01252 745444  
**W:** farnhammaltings.com  
Open: First Saturday of every month,  
9.30am-4pm



### Creating a future for ceramics

Creative courses, educational workshops, inspiring masterclasses, children's creative clay club, studios, open access and a hireable crafts space.

[www.318ceramics.co.uk](http://www.318ceramics.co.uk)



ENJOY

GRAYSHOTT  
Pottery

STUDIO ART GALLERY | CAFÉ | WORKSHOP TOURS | SHOP

Book a free JOURNEY OF THE CLAY tour and experience the Pottery from behind the scenes

Relax in our warm and friendly café

Enjoy gift inspiration in our shop from our own vibrant Studio Art to jewellery, soft scarves and silky cushions



INSPIRATION FOR YOU, YOUR HOME AND YOUR FRIENDS

**Shop opening times**  
Monday to Saturday 9am – 5.30pm  
Sundays and Bank Holidays 10am – 4.00pm  
Visit [www.grayshottpottery.com](http://www.grayshottpottery.com) for events

Grayshott Pottery | School Road  
Grayshott | Near Hindhead  
Surrey | GU26 6LR  
**T: 01428 604 404**

WANT THE **RED**  
CARPET TREATMENT?



FARNHAM **F** CARPETS

The carpet company people recommend...



- COMPETITIVE PRICES
- PROFESSIONAL ADVICE
- QUALITY SERVICE
- FREE ESTIMATE & MEASURING

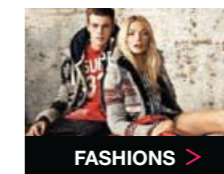
[www.farnhamcarpets.com](http://www.farnhamcarpets.com)

tel: 01252 714433

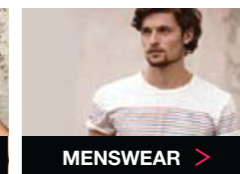
[info@farnhamcarpets.com](mailto:info@farnhamcarpets.com)

Elphicks  
Est.1881  
THE DEPARTMENT STORE

Our buyers strive to source original and innovative products that have a sense of fun, whilst maintaining our traditional criteria of quality and value.



FASHIONS >



MENSWEAR >



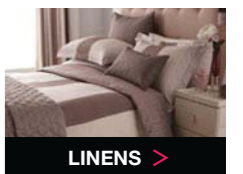
HOMEWARES >



COSMETICS >



TOYS >



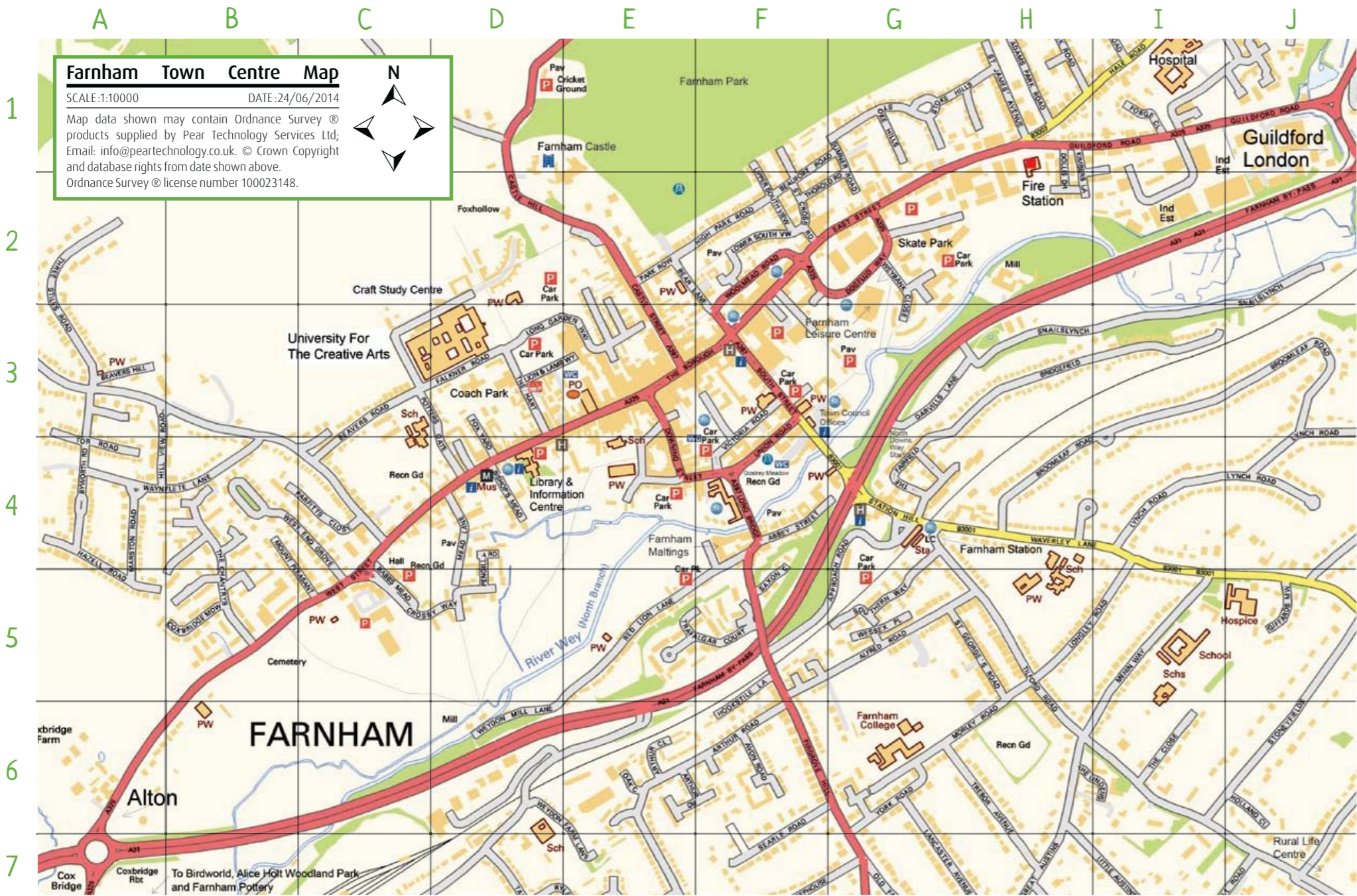
LINENS >

10-13 West Street, Farnham,  
Surrey, GU9 7DN.

T: 01252 716222  
[www.elphicks.co.uk](http://www.elphicks.co.uk)

**MONDAY TO SATURDAY 9.30AM – 5.30PM**

# Farnham Town Map



## Places of Interest (In Town)

Adult Education Centre .....	4D
Archie's Launchpad .....	3D
Bishop's Meadow .....	5D
Borrelli Walk.....	3F
Craft Study Centre .....	3D
Farnham Castle.....	1D
Farnham Cricket Club .....	1D
Farnham Football Club.....	4D
Farnham Hospital .....	1I
Farnham Leisure Centre.....	2G
Farnham Library .....	4D
Farnham Maltings .....	4F
Farnham Park, The Avenue.....	1F
Farnham skatepark .....	2G
Farnham station .....	4G
Farnham Town Council Offices .....	3G
Gostrey Meadow.....	4F
Information Point (Mercure Farnham Bush Hotel) .....	3F
James Hockey Galleries .....	3D
Museum of Farnham .....	4D
New Ashgate Gallery .....	4E
North Downs Way trail start .....	4G
Post Office .....	3E
St Andrew's Church.....	4E
Stay and Play .....	3F
Vernon House (Surrey County Council registrar) .....	4D
United Reform Church .....	3F
University for the Creative Arts .....	3D
Victoria Garden.....	3F

## Places of Interest (Out of Town)

<b>North</b>
Army Medical Services Museum, Aldershot
Aldershot Military Museum
Blackwater Valley
<b>South</b>
Frensham Ponds, Frensham
Grayshott Pottery, Grayshott
Hindhead and the Devils' Punchbowl
Hollycombe Steam Museum, Liphook
Ludshott Common, Grayshott
Rural Life Centre, Tilford
The Sculpture Park, Churt
Watercress Line, Alton
<b>East</b>
Dapdune Wharf, Guildford
Farncombe Boathouse, Farncombe
Farnham Rugby Club
Guildford Cathedral, Guildford
Hogs Back Brewery, Runfold
The Lightbox, Woking
Waverley Abbey, Farnham
Watts Gallery, Compton
<b>West</b>
Alice Holt and Go Ape, Bucks Horn Oak
Birdworld, Wrecclesham
Farnham Pottery, Wrecclesham

## Key to Map

	..... Car Park		..... Museum
	..... Children's Play Area		..... Post Office
	..... Coach Park		..... Public Toilets
	..... Cycle Racks		..... Visitor Information Point
	..... Hotel		

# Farnham for families

Farnham is great for children and their parents, with a whole host of family friendly attractions to enjoy all year round. From penguin feeding and animal handling at Birdworld to old fashioned fun at the Rural Life Centre in Tilford, or steam train rides at Hollycombe or the Watercress Line in Alton and puppet theatre performances to enthrall at the Farnham Maltings.

## Low cost days out

For keeping down the cost of a family day, Farnham has the brilliant **Alice Holt** forest (just pay for parking) with its excellent trails to explore on wheels or by foot and wooden sculptures to clamber (plus Go Ape if you are looking for something higher off the ground) or for the local beach visit **Fresham Ponds** (again just pay for parking in the summer). The free **Museum of Farnham** with its changing exhibitions and local history, children's activities and events is worth a look and Farnham Castle keep, overlooking the town, is free of charge to the public. The ruins of **Waverley Abbey** just outside the town centre are also free to explore and are managed by English Heritage.

To expel energy the town has some prize playgrounds in **Gostrey Meadow** and two in Farnham Park as well as the flat River Wey path with ducks to feed and the secret **Victoria Garden** maze to discover.

## For rainy days

Visit the indoor soft play centres: **Stay and Play** (Tel: 01252 711129) or **Archies Launchpad** (Tel: 01252 726110), a daily session of fun time gym at **Farnham Leisure Centre** (Tel: 01252 723208) or the purpose built **Rushmoor Gym** (Tel: 01252 320888) nearby in Aldershot.

Local garden centres in Badshot Lea, Tilford, Wrecclesham and Churt cater for kids with animals to view, play areas and great coffee for the grown-ups.

Looking for something different - pop into **Farnham library** on West Street with its weekly story time sessions and lovely garden where playful events are held or **Challengers**, St James' Avenue with its weekly groups and great facilities for all.

**Ceramics Cafés** offer a creative indoor option, with one family friendly studio in Downing Street (Tel: 01252 727555) and another in Badshot Lea (Tel: 01252 643012).

## Feeding the gannets

From pubs where kids eat for free to restaurants with kids menus and activities, Farnham has plenty for your brood to devour before moving on to the next activity.

### Birdworld

Holt Pound, Farnham, Surrey GU10 4LD  
T: 01420 22992  
E: enquiries@birdworld.co.uk  
W: birdworld.co.uk  
Open: Mon-Fri 9.30am - 5.30pm



## Birdworld

A great, fun family day out. The 26 acre park is home to hundreds of unusual birds, and also a fabulous farm (home to a pair of reindeer!), an aquarium and the wonderful Forest Lodge Garden Centre; so there really is a packed day out to be had for all ages! There is a busy schedule of daily events: brightly coloured birds; fabulous keeper talks, feeds and two amazing daily shows, the Outdoor Flying Display and the Discovery Theatre Show.

Farnham and its beautiful surrounding countryside can be inspirational for children and the area now benefits from some new bespoke activities for young ones such as **"Follow your Wellies"** weekly adventures or the **"Farnham Family Walking Group"**.  
See [www.farnham.gov.uk](http://www.farnham.gov.uk)  
[www.facebook.com/followyourwellies](https://www.facebook.com/followyourwellies)  
and [www.facebook.com/Farnham-Family-Walking-Group](https://www.facebook.com/Farnham-Family-Walking-Group) for more details.



### Alice Holt

Bucks Horn Oak, Farnham GU10 4LS  
T: 01420 520212  
W: [forestry.gov.uk/aliceholt](http://forestry.gov.uk/aliceholt)  
Open: 8am-5pm (Dec-Feb),  
8am-6pm (Mar & Nov), 8am-7pm  
(Apr & Oct), 8am-9pm (May-Sep)

### Farnham Music and Drama

78 Tilford Road, Farnham GU9 8DW  
T: 01252 727617  
E: [mail@farnhammusicanddrama.com](mailto:mail@farnhammusicanddrama.com)  
W: [farnhammusicanddrama.com](http://farnhammusicanddrama.com)  
Open: 9am-9pm

### Hollycombe Steam Museum

Iron Hill, Liphook, Hampshire GU30 7LP  
T: 01428 724900  
W: [hollycombe.co.uk.com](http://hollycombe.co.uk.com)  
Open: Wed - Sun and Bank Holiday  
Mondays 11am - 5pm

### Stagecoach Theatre Arts Farnham

Farnham College, Morley Road,  
Farnham GU9 8LU  
T: 01252 216277  
E: [farnham@stagecoach.co.uk](mailto:farnham@stagecoach.co.uk)  
W: [stagecoach.co.uk/farnham](http://stagecoach.co.uk/farnham)  
Open: Friday & Saturday

### The Watercress Line

The Railway Station, Mid Hants Railway,  
The Watercress Line, Station Rd,  
Alresford, Hampshire SO24 9JG  
T: 01962 733810  
W: [watercressline.co.uk](http://watercressline.co.uk)  
Open: Weekends Feb-Oct,  
midweek May-Sep

### Waverley Abbey

Waverley Lane, Farnham GU9 8EP  
W: [english-heritage.org.uk](http://english-heritage.org.uk)  
Open: Mon-Fri 9.30am - 5.30pm



## Free music in the meadow

Every Sunday afternoon from May to September Gostrey Meadow hosts a live band for all to enjoy. Bring a picnic, some bubbly and enjoy. For details see [www.farnham.gov.uk](http://www.farnham.gov.uk).



## The best adventure play centre in the Universe

Archies Launchpad is all you need for the perfect playtime. Excellent play equipment, clean safe facilities, great coffee and a good time guarantee.

Find us at  
**The North Barn, Lion and Lamb Way, Farnham,  
Planet Earth, Milkyway Galaxy, The Universe.**  
website: [archieslaunchpad.co.uk](http://archieslaunchpad.co.uk) phone: 01252 726110

# Events and festivals

Farnham Town Council and various community groups in the town organise a wonderful range of events and festivals throughout the year.

From duck races in May to a Christmas light switch-on, free music events in the summer months to Heritage Open Days each September, here are just a few samples of some of the vibrant events that take place in Farnham. To find out what's on see [www.farnham.gov.uk](http://www.farnham.gov.uk), Facebook or Twitter.

## Craft festivals

Farnham Maltings is the cultural hub of Farnham and hosts three annual craft festivals a year; Festival of Crafts, Thread and Unravel. With workshops, demonstrations, exhibitions, talks and the chance to browse a lively market place, the venue also hosts national events such as Sugarcraft, Art in Clay and The Quilters Fair, as well as events such as Beerex, attracting real ale drinkers from miles around. Tel: 01252 745444 or see [www.craft.farnhammaltings.com/festivals](http://www.craft.farnhammaltings.com/festivals).

## Farnham carnival

Farnham carnival has been a colourful highlight of the town's summer event scene for several decades, taking place on the last Saturday in June.

A fabulous event for everyone, the carnival is organised by The Lions and The Hedgehogs with Farnham Town Council's support. The carnival comprises two distinct but complementary events; the fayre and the procession.

Farnham carnival fayre takes place all day in Gostrey Meadow and the procession encourages young people to promote their school or club and others their local business. It is great fun to watch. For more information visit [www.farnhamcarnival.org.uk](http://www.farnhamcarnival.org.uk).

## Weyfest music festival

Held at the wonderful woodland setting of The Rural Life Centre in Tilford, this three day music event goes from strength to strength with adventurous line-ups, welcoming atmosphere, friendly staff and smiling security! Weyfest is first and foremost a family festival, and each year more is done to cater for children (and young-at-heart adults) with an ever expanding Kids' Zone, more kids' events and interesting workshops.

The Rural Life Centre is a working museum, littered with artefacts of bygone country life and craft displays throughout the venue. In fact, Weyfest is more like a mini-holiday than a music festival. A stress-free weekend in the country, a great selection of food from the in-house café and the plentiful food stalls, fully stocked bars, a fascinating museum and a real mix of music. For details see [www.weyfest.co.uk](http://www.weyfest.co.uk).



– Farnham Carnival © David Fisher A&FCC

## Farnham's Community Games

Farnham Sports Council host an annual Community Games for "all to have a go" on August Bank Holiday Monday. The event, held at Farnham Rugby Club, attracts over 1,200 people, participating in the 30 sports and activities on offer. [www.communitygames.org.uk](http://www.communitygames.org.uk).

## Farnham Fireworks

The Firework Fiesta, organised by Farnham's Round Table, is a magical annual event for all the family held in early November. With a torchlit procession leaving the town centre for Farnham Park and an amazing firework display, all proceeds go to charity. For details [www.farnhamroundtable.org.uk](http://www.farnhamroundtable.org.uk). Farnham Rugby Club also hosts an alternative display at the ground. For details Farnham Rugby Union Football Club on Facebook.

## Free events

Free events include **Music in the Meadow**, organised by Farnham Town Council and held from 3-5pm every Sunday throughout the summer months at Gostrey Meadow. There is also a day long **Picnic in the Meadow** held in late June to showcase local bands.

As well as the monthly **Farmers' Market** in the town's central car park, in September Farnham holds a two week long **Food Festival** celebrating locally sourced produce and eateries. Culminating in a huge street event on Castle Street. There are 60-80 food stalls to visit and live cooking shows to experience, perhaps with a glass of Pimms.

Held on the second Sunday in December, **Farnham's Christmas market** takes place on the beautiful Castle Street, an excellent opportunity to browse local produce and craft makers and pick up a few unique gifts. For more information see [www.farnham.gov.uk](http://www.farnham.gov.uk).



– Thread... a festival of textiles © Liene Abaronina

## Annual village events

Each year sees Farnham's villages put on some lovely community events for visitors and residents alike.

**The Bourne Show** is held on the third Saturday in July. It is a traditional show with stalls, competitions and refreshments. It is held on the Bourne Green.

Every year **Hale Carnival** on the village green is held on the first Saturday in July.

**Rowledge Village Fayre** is held on the second Bank Holiday Monday in May.

**Wreclesham Village Fayre** takes place in late June at the local recreation ground and is well worth a visit.



– Farnham's Community Games

# Explore

There is so much to explore in this beautiful part of England. From the ruins of Waverley abbey, the charming Georgian town centre with its 12th century castle and keep, wonderful walks at Frensham Ponds and Hankley Common to the delightful surrounding villages of Badshot Lea, The Bourne, Hale, Heath End, Rowledge, Weybourne and Wrecclesham.

## Green open spaces

### Bishop's Meadow

Loved by those who know of this peaceful haven to play, picnic, stroll, walk the dogs or just sit, and well worth discovering for those not yet familiar...

The Meadows are 35 acres of ancient hay meadow lying between central Farnham and the A31 by-pass. A branch of the River Wey flows through them and a public footpath to Coxbridge and Wrecclesham runs right across the northern edge of the Meadow. The Meadows are now owned by the local community Bishop's Meadows Trust for the people of Farnham.

The Trust is working to restore the Meadows to their former glory as flowering hay meadows. The trust holds regular conservation events and welcomes volunteers who can help with restoring the meadows or with fundraising. The meadow has a community orchard for six Farnham Schools who recently helped to plant 30 fruit trees - five for each school to care for, study and enjoy.

The meadows are accessible by foot from several public footpaths: from St Andrew's Church, Red Lion Lane and Crosby Way. [www.bishopsmeadowtrust.org](http://www.bishopsmeadowtrust.org).

### Farnham Park

Farnham Park is a lovely asset to the town, situated just a few hundred metres from Castle Street. This 320 acre (130 hectare) medieval deer park with its impressive one kilometre tree lined Avenue offers tranquility, walking paths, two excellent playgrounds, football pitches to hire, a golf course, a cricket pitch, café and toilets. For more information including wildlife and history leaflets. Tel: 01252 717047 or see [www.waverley.gov.uk/farnhampark](http://www.waverley.gov.uk/farnhampark).

**"To walk under the gnarled, ancient boughs of the Park's Oaks, and realise these are the same trees that Kings and Queens rode past some 500 years past, gives you an enormous sense of continuity and wellbeing."**

– Robin Crowther, Farnham Park Ranger



– Farnham Park © N Hogan



### Gostrey Meadow and Borelli Walk.

Gostrey Meadow, an attractive open plan park, links Farnham Maltings and the River Wey to the town centre with entrances at South Street, Union Road and Longbridge. The large grassed area has an excellent children's playground, access to paddling in the River Wey, the War Memorial and a bandstand hosting numerous musical events throughout the summer, making a perfect spot to relax and spend a lazy day.

Follow the River Wey through Borelli Walk towards the Shepherd and Flock and the North Downs Way perhaps catching a glance of the resident egret.



– Victoria Gardens

### Victoria Garden

Right in the heart of the town centre, Victoria Garden is a real secret gem created on the site of the former Victorian open-air swimming baths. The entrance through the archway off South Street reveals a wonderful planting of roses, clematis, lavenders, hebes and sedums and the garden contains a mini-maze that children love. The garden is managed by the Farnham Swimming Baths Trust with the support and help of a dedicated group of Friends. In 2013 Victoria Garden was awarded outstanding in the Small Parks category for South and South East in Bloom. [www.farnhamvictoriagarden.org](http://www.farnhamvictoriagarden.org).

### Village greens

Surrounding Farnham town centre are some quintessentially English village greens, with games of village cricket and fun summer fayres, The Bourne, Hale, Rowledge and Tilford to name but a few.

## Accessible trails

Gateway to the South Downs National park, Alice Holt has an accessible double looped trail (1.5 miles/ 2.5 km) designed for those with limited mobility or with a buggy. Tel: 01420 520212.

Farnham Park has a lower wide path from which to view the landscape, becoming a circular walk taking in The Avenue of trees towards the castle when the ground is not wet.

The Basingstoke Canal and Blackwater Valley, off the M3 junction 4, offer a restored waterway and towpath linear trail suitable for wheelchairs and 23 miles of riverside path of which eight miles are accessible. Tel: 01252 370073.

Enjoy an accessible trail across open heathland on Elstead Common. Start at the parking area at Royal Common off the B3001, bus service 46.

The boardwalk at Frensham Great Pond is a pleasant short walk with information panels near the car park, suitable for wheelchairs (and small children).



## National Trust

The National Trust own, manage and preserve much of the wonderful countryside and stunning scenery surrounding Farnham. Escape the rush and find the perfect walk, cycle route or picnic spot and explore our natural environment.

As well as **Frensham Little and Great Ponds**, why not admire the views from the **Devil's Punch Bowl** or across the Weald from **Gibbet Hill** in Hindhead or ramble 705 acres of open heathland on **Ludshott Common**, Grayshott.

In fact **Hindhead Commons** and the Devil's Punch Bowl were one of the earliest acquisitions for the National Trust in 1906 thanks to local Hindhead resident Sir Robert Hunter. This area is now designated as an Area of Outstanding Natural Beauty (AONB) and with an abundance of wildlife the area is also a Site of Special Scientific Interest (SSSI).



–Farnham countryside © A Perrin

## Waterways

The River Wey meanders right through the heart of the town, bringing fishing opportunities, the annual duck race and river walk to enjoy, eventually flowing into the great river Thames. See the guide's central map for walk details and [www.farnham.gov.uk](http://www.farnham.gov.uk) for duck race dates and fishing information.

### Basingstoke Canal

A short drive from Farnham brings you to the tranquil Basingstoke Canal that bisects Surrey and Hampshire, linking Woking to Fleet. Recently regenerated, this now offers lovely canal path walks, narrow boat hire (great fun learning to steer) or short cruises with afternoon tea. There is also The **Canal Visitor Centre** at Mytchett. For details see [www3.hants.gov.uk/basingstoke-canal](http://www3.hants.gov.uk/basingstoke-canal).

### Frensham Ponds.

Part of the Greensand Way that crosses Surrey, and once drained during WWII as they were visible landmarks for the enemy, Frensham Little and Great ponds provide a wonderful local location to discover. A perfect place to run, walk dogs, build sandcastles, sail and even paddle in the summer months. Frensham Ponds are part of the National Trust network and managed by Waverley Borough Council. For a relaxing day whatever time of the year, Frensham Ponds are a great escape from the hustle and bustle. With cream tea at Frensham Pond Hotel, Frensham Garden Centre or the Rural Life Centre.

**Godalming Boathouse** (Tel: 01483 421306 ) and **Guildford Dapdune Wharf** (Tel: 01483 561389) are within 20 minutes of Farnham and provide row boat hire and further relaxing cruise options to while away the hours.

## The River Wey valley

Follow the North Downs Way to medieval **Waverley Abbey**, via Mother Ludlam's Cave and the Farnham "Everglades". Starting near Farnham railway station, off the A31, this rural bridleway takes walkers from the market town via Moor Park. En route you will discover Mother Ludlam's Cave, the subject of a number of local legends. Follow the sinuous River Wey until you reach Waverley Abbey.

It is said Mother Ludlam would loan utensils, but when a large cauldron was borrowed and not returned she became so enraged that the borrower, scared by Ludlam's anger, sought refuge in Frensham Church. The cauldron associated with this legend remains in the church to this day.

Another version of the legend is that one day the Devil, in disguise, visited Mother Ludlam and asked to borrow the cauldron she used for mixing her potions. Recognising the Devil from his hoof-prints in the sand, she refused, so the Devil stole the cauldron, with the witch in pursuit. Making great leaps, the Devil created a series of hills where he touched the ground, these now being the sandstone hills near Churt known as the Devil's Jumps. The Devil dropped the cauldron – or kettle – on the last of these hills, "Kettle Bury", or "Kettlebury Hill". Mother Ludlam recovered the cauldron and placed it in Frensham Church, where it would be safe from the Devil.

The monastery at Waverley, the first Cistercian abbey to be established in Britain, was founded by William Gifford, Bishop of Winchester, in 1128. The monks and lay brothers farmed the surrounding land and provided shelter for pilgrims and travellers and an infirmary for the sick. Finally in 1536, with the dissolution of the monasteries by Henry VIII, the site passed to Sir William Fitzherbert, treasurer of the king's household. Much of the abbey was dismantled and some of the stone was reused to build Sir William More's house at Loseley, a few miles to the east near Guildford.

The site, now managed by English Heritage and free to visit, remains a tranquil location and so is often used in films and by photographers as a stunning backdrop.

To complete this walk one can continue towards Tilford and the scenic village pub, the **Barley Mow** or head back to Farnham stopping off at the **Shepherd and Flock** pub, for refreshments.



– Waverly Abbey © C Whitehouse

## Exploring local churches

Entering a local church to attend a service or simply admire the architecture is an enchanting thing to do. Farnham and its surrounding parish villages offer numerous possibilities from the 12th century foundations at **St Andrew's**, now updated sympathetically by Architect Ptolemy Dean to the quaint chapel of **St Martin's**, on the Bourne Green, or beautiful parish churches in Hale, Frensham or Seale.

For more information visit [www.churchestogetherinfarnham.org.uk](http://www.churchestogetherinfarnham.org.uk).



–St. Andrews Church © R Atkinson

## Film Locations

Farnham and its wonderful countryside, in particular the coniferous woodland of Bourne Woods near Tilford, has frequently been used as a film location, including the blockbusters: **Gladiator** (2000), **Harry Potter and the Half Blood Prince** (2009), **Robin Hood** (2010), **War Horse** (2011) and **Snow White and the Huntsman** (2012). Though there might not be any sets to view, the Greensand Ridge is lovely to stroll upon and admire local wildlife, such as woodlark, the Dartford warbler and even a sand lizard if you are lucky.



– Bourne Woods © J Paynter

## Sport and leisure

Want to let off some steam? Whether you wish to participate or just spectate there are a multitude of sporting activities to get stuck into in Farnham.

### Rugby

**Farnham Rugby Club** has a strong emphasis on the local community, with 24 teams to choose from! Four very successful men's teams; girls' teams, youth teams and minis. Past players include Jonny Wilkinson and Peter Richards who played for the winning English World Cup team in 2007. [www.farnhamrugby.org](http://www.farnhamrugby.org).

### Golf clubs

The Farnham countryside is ideal for golf, with the nearest course located in the north of Farnham Park, five minutes walk from the castle. A par 3, nine hole, course course to stay in practice with a cafe for partners and the park next door for children.

**Farnham Golf Club** was founded in 1896 on the outskirts of the town in The Sands and boasts a testing but rewarding course amongst parkland, pine and heather. Visitors are welcome. Tel: 01252 782 109 or [www.farnhamgolfclub.co.uk](http://www.farnhamgolfclub.co.uk).

Other golf clubs:

**Hankley Common Golf Club**, with its open qualifying course [www.hankley.co.uk](http://www.hankley.co.uk).

**Blacknest Golf & Country Club** [www.blacknestgolf.co.uk](http://www.blacknestgolf.co.uk).

**Oak Park Golf Club, Crondall** [www.oakpark.co.uk](http://www.oakpark.co.uk).

### Running

The surrounding heath and common landscape is perfect for running. Farnham now hosts the cross country **Pilgrims Marathon** ([www.farnhampilgrim.org.uk](http://www.farnhampilgrim.org.uk)) once a year and other races such the **Woodland Woogie** 6-10k

in Seale. However, if you are looking for more structure and companions try a local running club, such as **Farnham Runners** with their Alice Holt Forest races in September [www.farnham-runners.org.uk](http://www.farnham-runners.org.uk) or **Blackwater Valley Runners**, [secretary@bvrrunners.org.uk](mailto:secretary@bvrrunners.org.uk).

### Football

Founded in 1906, the **Farnham Town football club** has a first team, seven academy teams, a ladies' team and minis. Why not support the local team at a home match off West Street. Tel: 01252 715305. [www.farnhamtownfc.com](http://www.farnhamtownfc.com) Many of Farnham's villages have historic football clubs with very active teams.

**Badshot Lea football club**. was initially formed in 1907 and now has approximately 30 teams. Further details can be found at [www.badshotleafootballclub.co.uk](http://www.badshotleafootballclub.co.uk).

### Cricket

**Farnham Cricket Club** is one of the oldest clubs in the country. Founded in 1782, the club maintains a site adjacent to the castle in Farnham and one in Crondall. With several teams playing each Saturday and Sunday they always welcome visitors who enjoy cricket. Tel: 01252 714860 [www.farnhamcc.co.uk](http://www.farnhamcc.co.uk) Other local cricket clubs include:

**Badshot Lea Cricket Club** [www.badshotleacc.com](http://www.badshotleacc.com).

**Rowledge Cricket Club** [www.rowledgecricketclub.com](http://www.rowledgecricketclub.com).

**Hale Cricket Club**.

### Angling

Farnham has a wide diversity of fisheries to cater for the needs of the fish and anglers.



– A line-out at Farnham Rugby Club

Founded in 1906, **Farnham Angling Society** is one of the oldest and most successful angling societies in England and members enjoy fishing in over 32 ponds, lakes and stretches of river including Frensham Great and Little Pond and the River Wey.

For more information tel: 01252 320871 or [www.farnhamanglingsociety.com](http://www.farnhamanglingsociety.com).

### Skateparks

"Narm" Skatepark is located in front of the Farnham Leisure Centre and was rebuilt in 2013 to cater for beginners to experts of all ages.

### Sailing

Sailing is available for all abilities with a vibrant sailability section, on the beautiful Frensham Great Pond; however you must be a member of the **Frensham Pond Sailing Club**. Tel: 01252 792859 [www.sailfrensham.org.uk](http://www.sailfrensham.org.uk).



– Farnham Town FC in action © E Marsh



– Cricket at Rowledge Village green

### Farnham's public leisure centre

The central Farnham site offers visitors access to almost every sport - swimming, dance and exercise classes, group cycling, trampolining and fencing. [www.placesforpeopleleisure.org/centres/farnham-leisure-centre](http://www.placesforpeopleleisure.org/centres/farnham-leisure-centre).

### Private Gyms

In addition to the gym at Farnham leisure centre, **David Lloyd** or **Nuffield Health** offer top quality facilities and expertise, with luxurious health spa treatments and rooms, children's classes and delicious eating options. [www.davidlloyd.co.uk/farnham](http://www.davidlloyd.co.uk/farnham). [www.nuffieldhealth.com/gyms/farnham](http://www.nuffieldhealth.com/gyms/farnham).

### Skiing

**Alpine Snowsports Centre**, Aldershot Whether you're skiing, snowboarding or donutting, young or old, learning skills or fine tuning them; with three slopes, each with their own lift and mist system, you can enjoy the thrill of a speedy descent, within ten minutes drive of Farnham. [www.activation.org.uk](http://www.activation.org.uk).



– Waiting for the Race © A Perrin

# Surrounding villages

Discover the beauty of some picture perfect villages surrounding Farnham.

## Bentley

Just five miles west of Farnham, Bentley offers a chance to visit a village which has not changed much in 50-100 years, with an attractive 12th century church, country pub, and a village fete that takes place every year in July.

The “hamlet” shop has been in the same family for four to five generations and boasts having starred in its own reality television show “The Village”. Bentley also has its own railway station.

[www.bentleyvillage.com](http://www.bentleyvillage.com).



– Countryside on Crondall Lane © J Paynter

## Churt

Situated between Farnham and Haslemere, Churt is on the edge of some stunning swathes of heath and common land from **Hankley Common** to The Devil’s Jumps and the Flashes.

Former Prime Minister, David Lloyd George, made Churt his home in 1921 and developed his estate in the village as he withdrew from the political scene.

The **Sculpture Park** in Churt now attracts thousands of visitors annually with its “most amazing collection of sculptures set in woodland and water settings”.

With its annual fete, Churt offers an afternoon of fun, games and entertainment for the whole family with tea and cakes by the WI and even a Tug of War on the recreation ground. [www.churfete.org](http://www.churfete.org) [www.churt.org](http://www.churt.org).



– Frensham Pond © J Paynter

## Crondall

A typical Hampshire village just north-west of Farnham with a lovely traditional village church, pubs and well preserved cottages. [www.crondall-pc.gov.uk](http://www.crondall-pc.gov.uk).

## Frensham

Frensham is famous for its Little Pond and Great Pond. Originally created in the 13th century to supply fish to the Bishop of Winchester whilst visiting Farnham Castle. Today the ponds and the surrounding area is a sanctuary for wildlife and is a Site of Special Scientific Interest. Look out for reed bunting, sedge warbler and great crested grebe, as well as nightjars and woodlarks. The ponds are also the backdrop for an hotel and used for sailing and fishing.

The post office and village shop is a community run shop and the village hosts an annual village fayre in June with traditional activities to enjoy. [www.frensham-pc.gov.uk](http://www.frensham-pc.gov.uk).



– Tilford Village Green and the Barley Mow pub.

## Elstead

Regarded as a pretty little village, Elstead is surrounded on three sides by woods and heathland, on the fourth by the River Wey water meadows. There has been a settlement in this part of the Surrey Hills for hundreds of years with links to the historical local economy and hops evident from the names of the pubs - ‘The Woolpack’, ‘The Golden Fleece’, ‘Elstead Mill’ and ‘The Donkey’. [www.elstead.org.uk](http://www.elstead.org.uk).

## Seale and The Sands

Situated on the Hogs Back in the beautiful landscape of the Surrey Hills. Seale and The Sands offer lots of sporting activities to enjoy, with a first class golf course, friendly bowling club and the Woodand Woogle, a spring run or walk at the Hampton Estate Seale. [www.woodlandwoggle.com](http://www.woodlandwoggle.com). [www.saspc.info](http://www.saspc.info).

## Thursley

Thursley is a walker’s paradise, just west of the A3. It is on the edge of a National Nature Reserve with areas of open dry heath land, peat bogs, pine and deciduous woodlands to explore, all within the Surrey Area of Outstanding Natural Beauty. The ‘Three Horseshoes’ pub makes a perfect resting spot. [www.thursley.org](http://www.thursley.org).

## Tilford

Tilford’s picturesque triangular village green with village cricket is often used in adverts for its idyllic portrayal of England. Sir Edwin Lutyens built the **Tilford Institute** which is now used for sports and events. The village boasts not one but two medieval bridges, one at either end of the green. Tilford also has a community run village shop. [www.tilfordinstitute.co.uk](http://www.tilfordinstitute.co.uk).

**The Rural Life Centre** attracts visitors to learn traditional crafts and country ways of life. [www.rural-life.org.uk](http://www.rural-life.org.uk).

Luxury self catering accommodation is next to the championship qualifying course at Hankley Common Golf Club. [www.tilfordwoods.co.uk](http://www.tilfordwoods.co.uk).

For more information on what to do and see in Surrey: [www.visitsurrey.com](http://www.visitsurrey.com).



– Seale Church © E Marsh



– Elstead Mill

# Eating and drinking

Farnham has long been a convenient stopping point for travellers to rest and enjoy a good hearty meal. From small coffee shops to inspirational fine dining settings, there is something to suit all appetites. Farnham offers locals and visitors alike the perfect quaint café, rural country pub or quality restaurant to enjoy an excellent range of local produce or international options. Here are just a few ideas, for more possibilities see [www.farnham.gov.uk](http://www.farnham.gov.uk).

## From breakfast to brunch

Set yourself up for the day in style with a wonderful English breakfast or one of a continental variety from a local hotel or restaurant. Alternatively cook your own mouth watering version using local produce picked up on a Sunday morning at the **Farmers' Market** in the centre of town (fourth Sunday of each month), after trying a few tasters in the process!

**Farnham Maltings** provides a comfortable cultural environment to snatch a coffee and cake break or visit another high street cafe in the town centre: individual businesses like **Poppy's tea room** in Badshot Lea, **Indigo Café** at the Bourne crossroads or the **Gorge Cafe** on East Street provide a lower budget cafe menu.

## 'Time on your hands' lunch options.

If you can spend a few relaxing hours over lunch then Farnham offers some exceptional experiences. **Brasserie Blanc** and the new **Bills** are perfect for enjoying any sunshine, while the **Lion and Lamb courtyard** with its cafe and **Côte Brasserie** is an ideal spot to take in the atmosphere.



– Loch Fyne

## Child friendly options

Slightly out of the town centre and ideal for those with children; **Squire's Garden Centre** in Badshot Lea has a great range of aquarium fish to view, a dining area which caters for children and there is an outside playground to explore. **The Rural Life Centre** cafe also offers lovely home-made treats and access to the old fashioned playground for kids and if it is just ice cream and sand you are after with your coffee, **Frensham Great Pond** is the perfect spot.

Weekend lunches in one of Farnham's town or country pubs, such as **The Lamb**, **The Wheatsheaf Bar and Grill**, **The Bat and Ball**, **The Spotted Cow**, **The Bluebell** or **The Shepherd and Flock** to mention only a few, are a fabulous way to spend your quality time with friends or family (including dogs), with menus changing with the seasons and often with a modern twist on the traditional roast.

## Afternoon tea

For a truly tranquil afternoon tea in lovely surroundings, try the historic **Mercure Farnham Bush Hotel's** "Garden Room" or courtyard with its very own fountain.

## Tasty evenings out

Farnham punches well above its weight in eating out venues. Every budget and taste is catered for, from popular pizzerias to tasty vegetarian possibilities. The old favourites Thai, Chinese, Indian and even fish and chips can be enjoyed in a restaurant setting.

## Farnham's very own Festival of Food for two tasty weeks each September



– Farnham Food Festival © D Fischer A&FCC

For deals and details see [www.farnham.gov.uk](http://www.farnham.gov.uk).

## Beer in Farnham

Hops brought prosperity to Farnham and although the town no longer requires the 200+ public houses as there once were, there remain some lovely town centre and country pubs where you can relax and unwind. The Hogs Back Brewery off the A31 also offers some great local beers to enjoy at your leisure and a brewery to tour. [www.hogsback.co.uk](http://www.hogsback.co.uk).



## Farnham Farmers' Markets

Fresh, local, seasonal and speciality produce and products. Talk to the stallholders before you buy.

**Central Car Park off Victoria Road**

4th Sunday of the month

**10am – 1.30pm**

**Farnham Town Council**

For more information please contact:  
 Farnham Town Council, Town Council Office, South Street, Farnham, Surrey G19 7RN  
 T: 01252 712667 E: [customer.services@farnham.gov.uk](mailto:customer.services@farnham.gov.uk) [www.farnham.gov.uk](http://www.farnham.gov.uk)

# Where to Stay

Whether you are looking for a cosy bed and breakfast, business hotel or fancy staying in an old coaching inn, there is somewhere perfect for your taste and budget in and around Farnham.

The majority of accommodation in Farnham has been officially star rated from one to five within the National Quality Assessment Scheme or rated informally on Trip Advisor.

The following descriptions can be used as a general guide:

Simple, practical and no frills ★

Well presented and well run ★★

Good level of quality and comfort ★★★

Excellent standard throughout ★★★★★

Exceptional standard with a degree of luxury ★★★★★★

To book, please contact the accommodation providers directly. Details were correct at the time of going to print. Farnham Town Council does not accept any responsibility for any incorrect information.

## Key to symbols

- No smoking
- Television in rooms
- Off street parking
- Licensed for alcohol
- Some disabled facilities
- Garden for residents
- Evening meal by arrangement
- Major credit cards accepted
- Ground floor bedrooms
- Dogs welcome by arrangement
- Children welcome (min age)
- Tea/coffee making facilities
- Lounge for residents' use
- Leisure facilities/entertainment
- Railway station within five miles
- Laundry/ironing
- Café/restaurant
- Microwave
- Linen/towel provided/for hire
- Dishwasher
- Wi-Fi

## Hotels

### Best Western Frensham Pond Hotel

Bacon Lane, Churt,  
Farnham, Surrey GU10 2QD  
T: 01252 795161  
W: [bestwestern.co.uk](http://bestwestern.co.uk)



### Bishop's Table Hotel

27 West Street, Farnham,  
Surrey GU9 7DR  
T: 01252 710222  
W: [bishopstable.com](http://bishopstable.com)  
E: [welcome@bishopstable.com](mailto:welcome@bishopstable.com)



### Legacy Farnham Hogs Back Hotel

Farnham, Surrey GU10 1EX  
T: 08444 119041  
E: [reception@farnhamhogsbackhotel.co.uk](mailto:reception@farnhamhogsbackhotel.co.uk)  
W: [legacy-hotels.co.uk/legacy-hogs](http://legacy-hotels.co.uk/legacy-hogs)



### Mercure Farnham Bush Hotel

The Borough, Farnham GU9 7NN  
T: 01252 715237 W: [mercure.com](http://mercure.com)



### The Princess Royal

Guildford Road, Runfold,  
Farnham GU10 1NX  
T: 01252 782243  
W: [theprincessroyal.co.uk](http://theprincessroyal.co.uk)



## The PRINCESS ROYAL



A warm welcome awaits the business or leisure traveller. We are open for breakfast, lunch and dinner or a few drinks with friends and family 7 days a week.

The hotel has 21 spacious en-suite bedrooms, satellite TV, free Wi-Fi and free parking. Enjoy freshly prepared home-made food, complimented with Fullers award winning ales and fine wines.

Book on our website or phone direct and quote FGUIDE14 to receive 10% off Best Available Rate.

Looking for a venue? We cater for birthdays, weddings, christenings and more for up to 100 guests.

Please contact us today for room rates and further information.



### THE PRINCESS ROYAL

Guildford Road, Runfold,  
Farnham, Surrey GU10 1NX

T: 01252 782243 F: 01252 784980  
E: [princessroyal@fullers.co.uk](mailto:princessroyal@fullers.co.uk)  
[www.theprincessroyal.co.uk](http://www.theprincessroyal.co.uk)

## Mercure Farnham Bush Hotel



Great Town Centre Location  
17th Century Oak Lounge  
Steeped in History, part of Farnham's Heritage Walk  
Tranquil Gardens & Terrace  
Home Made Afternoon Teas  
Refreshments served daily



The Borough, Farnham, GU9 7NN  
[www.mercure.com](http://www.mercure.com)  
Tel: 01252 715 237  
Email: [h6621@accor.com](mailto:h6621@accor.com)

## Bed & Breakfast

### Kiln Farm B&B

8 Kiln Lane, Lower Bourne,  
Farnham, Surrey GU10 3LR  
T: 01252 726083  
M: 07770 833772  
W: kilnfarmbandb.com



### Bentley Green Farm

Green Farm, The Drift, Bentley,  
Farnham, Surrey GU10 5JX  
T: 01420 23246  
W: bentleygreenfarm.co.uk



### High Wray

73 Lodge Hill Road, Farnham GU10 3RB  
T: 01252 715589  
W: highwray73.co.uk



### Sandiway

24 Shortheath Road,  
Farnham, Surrey GU9 8SR  
T: 01252 710721  
W: sandiwayfarnham.co.uk



### St Gallen

Old Frensham Rd, Lower Bourne,  
Farnham, Surrey GU10 3PT  
T: 01252 793412  
E: jenwilkins@gmail.com



### 1 Park Row B&B

1 Park Row, Farnham,  
Surrey GU9 7JY  
T: 01252 710249  
E: info@1parkrow.com  
W: 1parkrow.com



## Self Catering

### Neatham Barn

Neatham, Hants GU34 4NP  
T: 01420 541616  
W: neathambarn.com



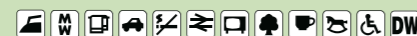
### Pittersfield

Hole Lane, Bentley  
Farnham, Surrey GU10 5LT  
T: 01420 22414  
W: pittersfield.co.uk



### The Granary

Stubbs Farm, South Hay,  
Kingsley, Hampshire GU35 9NR  
T: 01420 474906  
W: stubbsfarm.co.uk



### Kilnside Farm

Moor Park Lane,  
Farnham, Surrey GU10 1NS  
T: 01252 710325  
E: bobmilton@kilnsidefarm.fsnet.co.uk



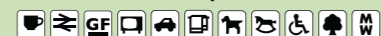
### Tilford Woods

Tilford Road,  
Farnham, Surrey GU10 2DD  
T: 01252 792199  
W: tilfordwoods.co.uk



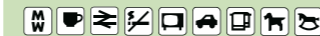
### High Wray

73 Lodge Hill Rd,  
Farnham, Surrey GU10 3RB  
T: 01252 715589  
W: highwray73.co.uk  
National Accessibility 1&2



### The Farnham Flat

33 Dollis Drive  
Farnham, Surrey GU9 9QD  
T: 01483 566285  
M: 07709 760000  
W: farnhamflat.co.uk



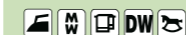
### Standford Lodge

Whitehill Road, Stanford,  
Bordon, Hampshire GU35 8QS  
T: 07747 056761  
W: standfordlodge.co.uk



### Bentley Green Farm

Green Farm, The Drift, Bentley,  
Farnham, Surrey GU10 5JX  
T: 01420 23246  
W: bentleygreenfarm.co.uk



### The Coach House

Stubbs Farm, South Hay,  
Kingsley, Hants GU35 9NR  
T: 01420 474906  
W: stubbsfarm.co.uk



### Woodpecker Cottage

1 Green Lane Villas, Green Lane,  
Churt, Nr Farnham GU10 2LT  
T: 07747 145146  
W: martincochrane.com/woodpecker



Gorgeous character cottage, woodland retreat,  
4 bedrooms (+ study), sleeps 8. Pets welcome.



# ST NICHOLAS' SCHOOL

FLEET • HAMPSHIRE

# BRIGHT INSPIRED HAPPY CONFIDENT LEARNING

- Girls from 3-16 years
- Boys from 3-7 years
- Small classes
- High academic attainment
- Superb facilities
- Rural site in extensive grounds
- Bursaries & Scholarships available
- School open from 8am-6pm



☎ 01252 850121 st-nicholas.hants.sch.uk

For more information please contact the Registrar:

registrar@st-nicholas.hants.sch.uk

St Nicholas' School, Redfields House, Redfields Lane, Church Crookham, Fleet, Hampshire GU52 ORF

Registered in England Reg.No. 872200 Reg. Charity No. 307341



# MISCELLANEA

— of Churt —

A unique shopping experience for all your interior and exterior design and decoration requirements

[www.miscellanea.co.uk](http://www.miscellanea.co.uk)  
[showroom@miscellanea.co.uk](mailto:showroom@miscellanea.co.uk)

Open: Mon - Fri 8:30 - 5:00 Sat 9:30 - 4:00

Tel: 01428 714 014  
"Crossways", Churt, Farnham, Surrey, GU10 2JA

[www.theSCULPTUREpark.com](http://www.theSCULPTUREpark.com)

600  
Sculptures  
2 Mile Trail  
10 Acres of Enchanting  
Arboretum & Water Gardens

Jumps Road  
Churt, Farnham  
Surrey GU10 2LH

£10 Adults  
£5 Concessions  
Under 5 Free