

# Annual Town Meeting 2015

The Bush Hotel, South Street, Farnham

26<sup>th</sup> March 2015 at 7.00pm

Minutes of previous Meeting held on 27 March 2014

Welcome by Mayor of Farnham, Cllr Jeremy Ricketts

Reports from Working Groups

*Break for Refreshments*

Open Session

Photos courtesy of: Farnham & Aldershot Camera Club, Farnham Town Council  
Farnham Herald & Surrey & Hants News Ltd.

# The Mayor of Farnham 2014/15

Cllr Jeremy Ricketts

# Mayor Making & Civic Service



# Working with the Community



**Farnham**  
Town Council



# Remembrance Day 2014



# Civic Christmas Concert 2014





# Mayor's Coffee Mornings 2014/15



# Mayor's Concert 2015





# Services to Farnham Awards



2015

# The Mayor's Charity 2014/15



This year, I have been fundraising for Post 19.

# Cemeteries

Lead Member: Cllr Carole Cockburn



# Cemetery Services

- The Town Council has four cemeteries:  
Badshot Lea, West Street, Green Lane and Upper Hale.
- Between April 2014 and March 2015, there were 30 burials, 20 interment of ashes, 67 memorial permits issued and a total of approximately 100 families assisted by the Cemeteries Team.



# Cemetery Maintenance Path Repairs





# Cemetery Improvements

- Last year the Council undertook a consultation with the public on managing dogs in the cemeteries. This resulted in the regulations being changed to allow dogs in the cemeteries, albeit on short leads.
- New bins have been purchased and will be fitted in the next few weeks.
- New noticeboards have also been purchased which are now in place and the old ones are being used in the allotments.





# Cemetery Chapels



*Hale Cemetery Chapels*



*Green Lane Cemetery Chapel*



*West Street Cemetery Chapel*

# Biodiversity



# Community Enhancement

Lead Member: Cllr Stephen Hill



# Community Enhancement Aims



- To improve and develop allotments, gardens, open spaces, street furniture and other public spaces in the Town Council area.
- To encourage community involvement and enhance the local environment.
- Ensure Farnham is a pleasant place to live, work and visit.

# Areas of Responsibility

- ▶ Street Furniture
- ▶ Public Conveniences
- ▶ Allotments
- ▶ Open Spaces Maintenance
- ▶ Farnham in Bloom
- ▶ New Bus Stops at Hale Road and Railway Station
- ▶ SCC Localism Scheme



# Farnham In Bloom



## History...

- 1989/90 – Farnham in Bloom begins
- 2006 - Farnham Town Council takes over FIB
- 2008 – Entered South and South East in Bloom
- 2013 – GOLD!
- 2014 – Britain in Bloom – Silver Gilt
- 2015 – 25<sup>th</sup> Anniversary of Farnham in Bloom





# Development of Farnham in Bloom

## Progress Since Introduction

- Clear focus on Community
- Greater involvement of Farnham's Villages
- Improvements to facilitate plant sustainability
- Improvements to facilitate environmental sustainability
- Work experience students, apprenticeships and Post 19



# The Community Group



Martin Billett and the Farnham in Bloom  
Community Team

# Calendar of Events 2015

22 - 29 March Spring Big Pick Week	
9 April	Farnham in Bloom Launch Evening
4 June	Greenhouse open day (10am – 12pm)
May	Sponsor board and hanging baskets to go up
27 June	Farnham in Bloom to have a float at the Farnham Carnival
30 June - 18 July	South and South East in Bloom Judging Days
1 <sup>st</sup> July	25 <sup>th</sup> Anniversary celebration at Squire's Garden Centre
2-4 July	Secret Garden Judging Days
16 July	Allotment Judging Day
11 September	South and South East in Bloom Awards Evening
8 October	Farnham in Bloom Schools Presentation and Awards Evening
25 October – 1 November	Autumn Big Pick Week
20 December	Farnham in Bloom Winter Celebration



# Future Plans & On-going Projects

- Year round litter picking
- Bulb planting by residents' groups
- Tackle traffic congestion and air pollution
- Continuing development of borders at the railway station
- Encourage further community involvement
- Educate about Sustainability (i.e. water saving measures)
- Farnham in Bloom Carnival float 2015
- Strategic Marketing and Stronger Branding
- Further Develop & Streamline Sponsorship



# 2015

## 25<sup>th</sup> Anniversary of Farnham in Bloom



# Tourism & Events

Lead Member: Cllr Jill Hargreaves



# Monthly Farmers' Markets



# Music in the Meadow





# Picnic in the Park





# Feast of Food



# Christmas Lights Switch-On 2014





# Italian Market





# Christmas Market 2014



# Sponsors 2014



- SECURITY SERVICES
- CLEANING SERVICES
- SPECIALIST SERVICES

01483 231 936



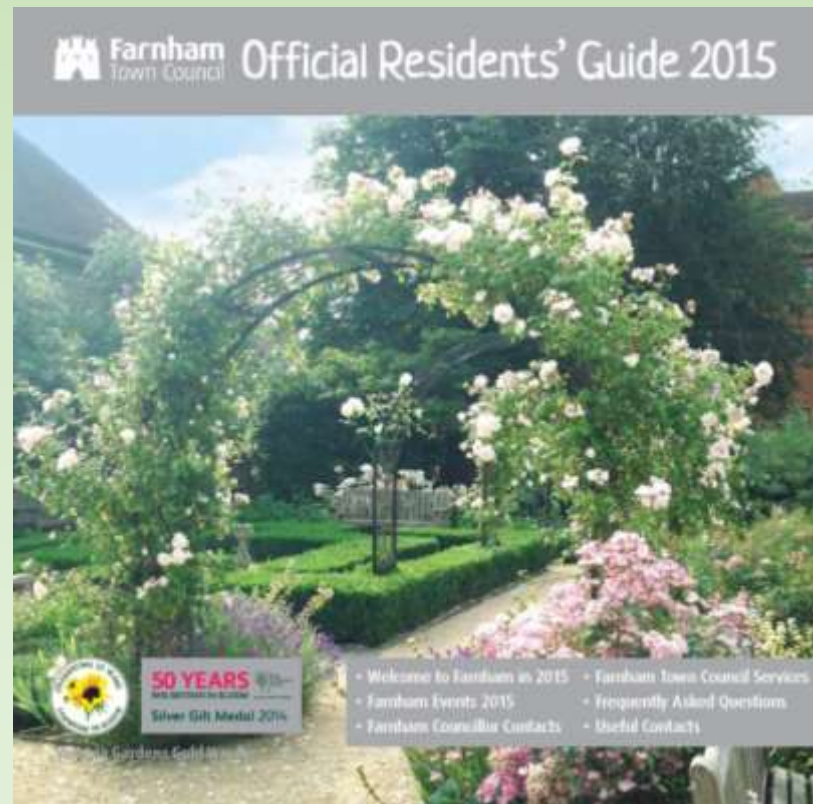
# Voluntary Support





# New Town Guide & Residents' Guide

- The Town Guide is funded solely through advertising sales.
- It is available for visitors and residents of Farnham free of charge.
- The Town Guide is also circulated around local hotels and visitor points.
- The Residents' Guide was new in 2013. It was sent to all households and contains useful information about Farnham and the local area, such as local events, FAQs and useful contact details for local doctors and hospitals.
- The 2015 Residents' Guide is currently being distributed.



# Craft Town Success



*Farnham Maltings*



*Farnham Pottery & 318 Ceramics*



*New Ashgate Gallery*

# Heritage Open Days



*Farnham Museum*



*Farnham Castle*



# Farnham Visitors' Forum



# This coming year...



# Planning & Licensing

Lead Member: Cllr Carlo Genziani



# Planning applications considered from 1<sup>st</sup> April 2014 - Present

Type of Application Considered	Total
Number of planning applications	844
Number of Listed Building applications	36
Number of Conservation Area applications	28
Number of applications considered for new and/or replacement dwellings	46
Number of applications considered with regard to mineral extraction or recycling	1
Number of applications for works to trees	73
Number of licensing applications	1

# Examples of other developments

- Weydon School – various applications for sport facilities, surface water drainage and expansion and erection of classroom block
- Land at Homefield Sandpit – various applications for extraction of sand
- Runfold South Quarry – various applications for details of landscaping and restoration and agricultural aftercare and temporary use of land for stockpiling clay to be used for restoration of the site
- Badshot Lea County Infant School – extension of storage building to form classroom and laying out of ancillary outdoor teaching and play area
- William Cobbett Junior School – construction of single storey classroom block comprising 2 classrooms and ancillary facilities

# Presentations received

- Taylor Wimpey plc re the erection of 14 dwellings – land at Farnham College Tennis Courts
- Harts Yard, West Street, Farnham
- Bridge House, South Street, Farnham

## Other consultations

- Consultation from neighbouring authority for 7 new dwellings – land west of Wood End, Fullers Road
- Consultation from neighbouring authority for change of use of an agricultural barn to a dwelling
- Consultation from a neighbouring authority for change of use of land for creation of 2 gypsy pitches for residential purposes
- Consultation from a neighbouring authority – outline application for erection of up to 50 dwellings and access, car parking and open space – land adjacent to Grange Farm, Tongham
- Consultation on a County Matter; Extraction of sand and clay from a site; filling of existing and resultant void with non-hazardous industrial, commercial, household and inert waste – land at Alton Road Sandpit

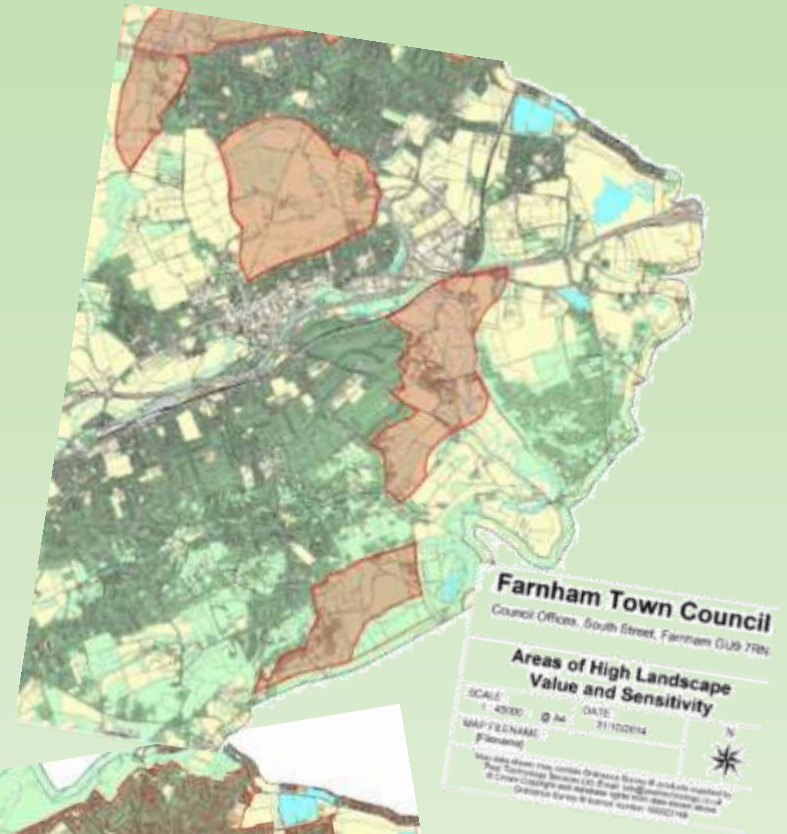


# The Farnham Neighbourhood Plan

CLlr Carole Cockburn



# The Farnham Neighbourhood Plan



# Strategy & Finance

Lead Member: Cllr John Ward



# Surrey County Council Services

- Bus permits
- Education
- Environment
- Footways
- Highways
- Libraries
- Minerals Management
- Social Services
- Street Lighting
- Trading Standards
- Transport
- Waste Disposal



# Waverley Borough Council Services

- Abandoned Vehicles
- Building Control
- Car Parks and Fines
- Council Tax Enquiries
- Electoral Registration
- Gypsy & Traveller Matters
- Housing & Homelessness
- Leisure Centres
- Licensing
- Museums
- Noise Pollution Management
- Parks & Recreation
- Pest Control
- Planning Control
- Rubbish Collection & Recycling
- Street Cleaning & Litter



# Farnham Town Council Services



**Farnham**  
Town Council



# Farnham Town Council Services

- Allotments
- Annual Town Meeting
- CCTV & Community Safety
- Civic Events
- Christmas Lights
- Cemeteries & Burials
- Farmers' Market
- Farnham in Bloom
- Graffiti Removal
- Grants
- Notice Boards & Street Furniture
- Planning – Statutory Consultee
- Public Conveniences
- South Street Trust
- Tourism & Events
- Town Partnerships
- War Memorials

# Your Farnham Representatives

## Single-Hatted



Cllr David Attfield  
Weybourne & Badshot  
Lea



Cllr David Beaman  
Upper Hale



Cllr Paddy Blagden  
Castle



Cllr Carole  
Cockburn  
The Bourne



Cllr Pat Frost  
Wrecclesham &  
Rowledge



Cllr Carlo Genziani  
Wrecclesham &  
Rowledge

## Dual-Hatted



Cllr Jill Hargreaves  
Firgrove



Cllr Stephen Hill  
Moor Park



Cllr Sam Hollins-  
Owen  
The Bourne



Cllr Jennifer  
O'Grady  
Hale & Heath End



Cllr Stephen O'Grady  
Hale & Heath End



Cllr Graham Parlett  
Castle

## Triple-Hatted



Cllr Jessica Parry  
Shortheath &  
Boundstone



Cllr Julia Potts\*  
Upper Hale



Cllr Susan Redfern  
Firgrove



Cllr Jeremy  
Ricketts  
Weybourne & Badshot  
Lea



Cllr Roger Steel  
Moor Park



Cllr John Ward  
Shortheath &  
Boundstone

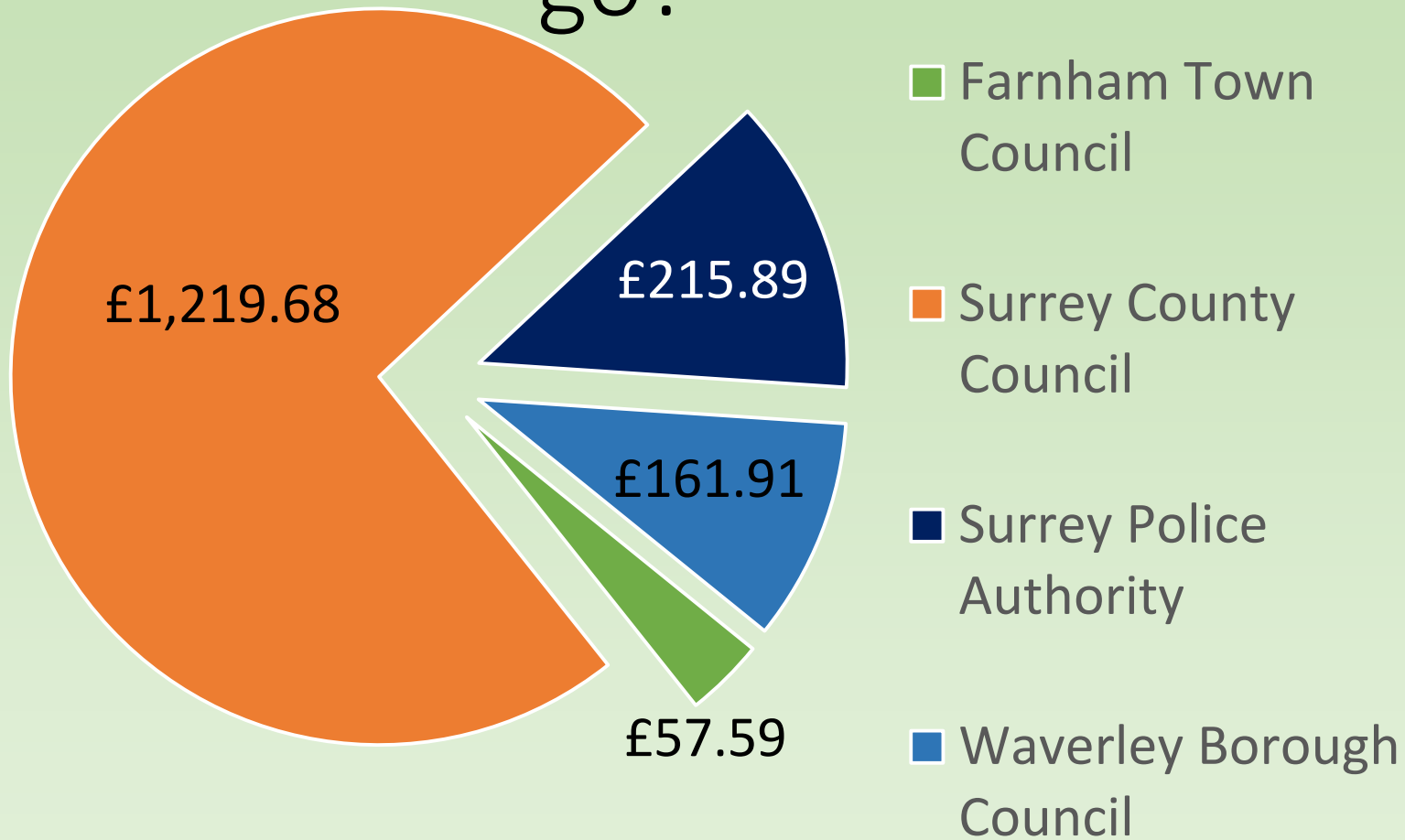
## \*WBC Executive Member

# Full Council Meeting Attendance 2014/15

		08.05.14	12.06.14	24.07.14	25.09.14	23.10.14	11.12.14	22.01.15	12.03.15	Total Attendance	Total Meetings	
David	Attfield	1	1	0	1	0	0	1	1	5	8	63%
David	Beaman	1	1	1	1	1	1	1	1	8	8	100%
Paddy	Blagden	1	0	0	1	1	1	1	1	6	8	75%
Carole	Cockburn	1	1	1	1	1	1	1	1	8	8	100%
Pat	Frost	1	1	1	0	0	1	1	1	6	8	75%
Carlo	Genziani	1	1	1	0	1	0	1	1	6	8	75%
Jill	Hargreaves	1	1	1	1	1	1	1	1	8	8	100%
Stephen	Hill	1	1	1	1	1	1	1	1	8	8	100%
Sam	Hollins-Owen	1	0	0	0	0	0	1	0	2	8	25%
Jennifer	O'Grady	0	0	0	0	1	1	0	0	2	8	25%
Stephen	O'Grady	0	0	0	0	1	1	1	0	3	8	38%
Graham	Parlett	1	1	0	1	1	1	0	1	6	8	75%
Jessica	Parry	0	1	1	1	1	0	0	1	5	8	63%
Julia	Potts	1	0	1	0	1	1	0	1	5	8	63%
Susan	Redfern	0	1	1	0	0	1	1	1	5	8	63%
Jeremy	Ricketts	1	1	1	1	1	1	1	1	8	8	100%
Roger	Steel	1	0	0	1	1	1	0	1	5	8	63%
John	Ward	1	1	1	1	0	1	1	1	7	8	88%
Total councillors in attendance		18	10	14	12	13	13	12	15		Avg Attendance	72%



# Where does your money go?

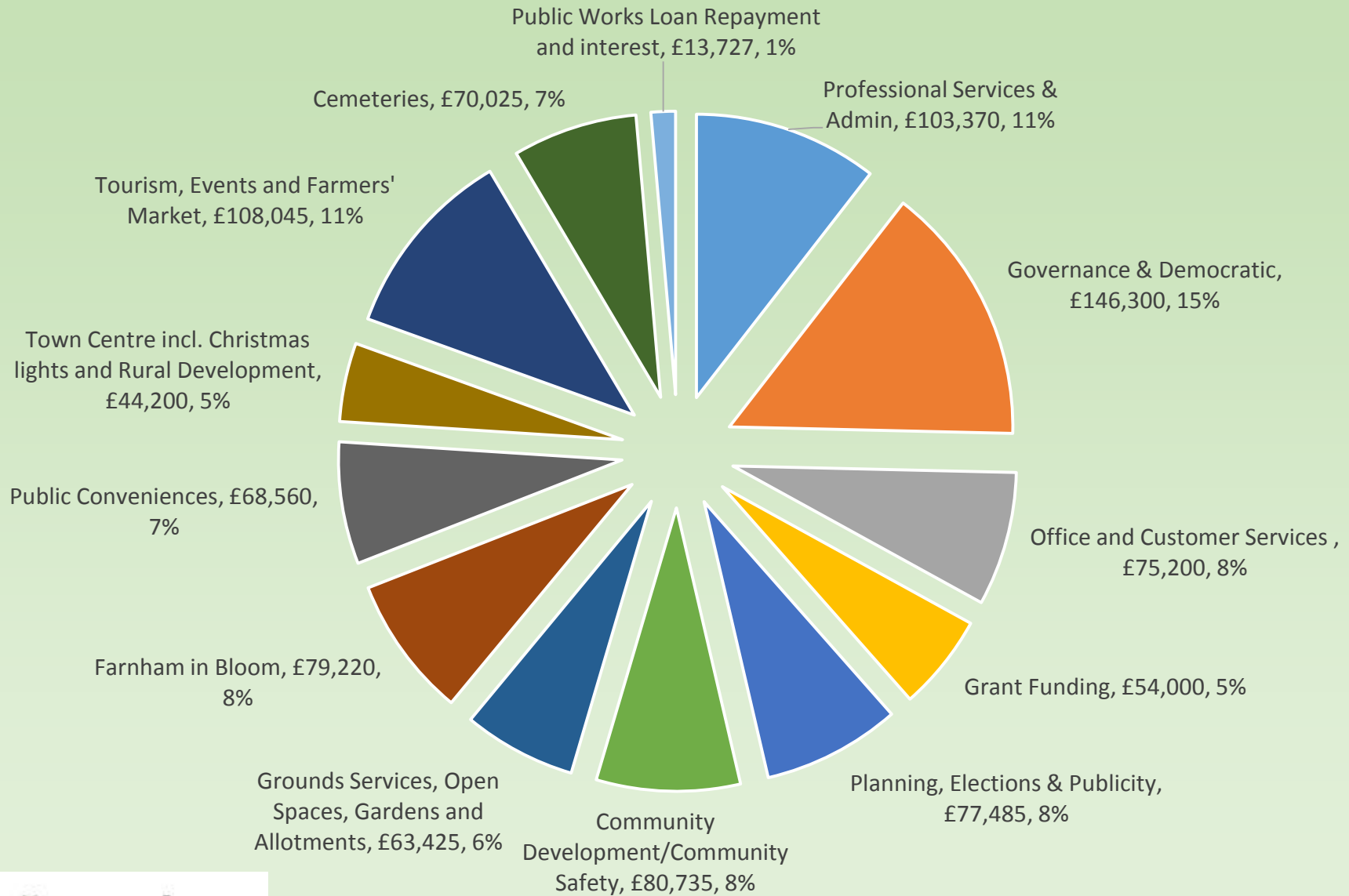


# How do we raise the money?

	<u>2013/14</u>	<u>2014/15</u>	<u>2015/16</u>
• Gross Budget	£1,096,522	£1,119,708	£1,163,892
• Projected Income	£141,600	£160,060	£179,600
• Grant & Savings	£47,063	£27,335	£23,235
• Precept	£907,859	£932,313	£961,057
• Taxable Band 'D' Properties*	16,253.1	16,393.5	16,686.9
• Annual Council Tax	£55.86	£56.87	£57.59
• Cost per household, per week	£1.07	£1.09	£1.11

\* Tax base based on 99% collection rate

# Planned Net Budget for 2015/16





# Highlights of the year



Next year...

More of the same?

This is your opportunity to tell us....

Thank you